

New records of Pennsylvanian phyllocarid crustaceans (Phyllocarida, Archaeostraca) from the Donets Basin, eastern Ukraine

Vitaly Dernov

Department of Palaeontology and Stratigraphy of the Palaeozoic Sediments, Institute of Geological Sciences of the NAS of Ukraine, Oles Honchar Street 55b, 01601 Kyiv, Ukraine; and Department of Geology, National Museum of Natural History of the NAS of Ukraine, Bohdan Khmelnytskyi Street 15, 01054 Kyiv, Ukraine
 e-mail address: vitalydernov@gmail.com

Abstract

A small phyllocarid faunule comprising *Dithyrocaris colei* Portlock, 1843, *D. cf. granulata* Woodward & Etheridge, 1873 and Phyllocarida indet. is described from black shale beds within coal-bearing deposits of the Mospyne Formation (upper Bashkirian, Lower Pennsylvanian) in the central Donets Basin, eastern Ukraine. All records of Carboniferous phyllocarids from the Donets Basin, including those by previous researchers, are preserved in black shales formed under dysaerobic conditions. In the Carboniferous of the Donets Basin, phyllocarids are found predominantly in the Bashkirian interval. Significantly fewer taxa have been recorded from the Serpukhovian, the Serpukhovian/Bashkirian boundary interval and the Upper Pennsylvanian.

Keywords: Phyllocarida, Carboniferous, Donets Basin, palaeoecology.

1. Introduction

Phyllocarids (Phyllocarida Packard, 1879) constitute a relatively diverse group of crustaceans distributed nearly globally (Rolfe, 1969; Rode & Lieberman, 2002; Briggs et al., 2011; Liu et al., 2023). They first appeared during the late Cambrian and include the extinct order Archaeostraca Claus, 1888 as well as the order Leptostraca Claus, 1880, which is distributed in modern marine basins (Collette & Hagadorn, 2010; Liu et al., 2023).

The Donets Basin in eastern Ukraine is a key region for studying Carboniferous marine and terrestrial biota of the palaeoequatorial belt, particularly crustaceans (e.g., Chernyshev, 1924, 1925, 1927, 1928, 1939, 1941; Bondarchuk, 1929; Batalina, 1933; Tchernyshev, 1935; Prykhod'ko, 1948; Dunaeva, 1950; Birshtein, 1966; Gorak, 1950, 1956, 1958a, 1958b, 1964, 1971, 1977; Schram, 1980; Fohrer et al., 2007; Dernov, 2022c).

The Carboniferous phyllocarid crustaceans of the Donets Basin are not well studied. Riabinin (1921) described *Dithyrocaris granulata* var. *donziana* Riabinin, 1921 from limestone bed D₁ in the Serpukhovian part of the Kalmius Formation. Later, Krestovnikov (1961) recorded three species of the genus *Dithyrocaris* Scouler, in Portlock, 1843 from three stratigraphical levels, namely *D. colei* Portlock, 1843 from the upper Bashkirian succession recovered in borehole No. 816 drilled near the town of Petropavlivka in the western Donets Basin, *D. tricornis* var. *aisenvergi* Krestovnikov, 1961 from Upper Pennsylvanian strata recovered at a depth of 396.0–398.2 m in borehole No. 9 near the village of Oskil in the Kharkiv Oblast, and *Dithyrocaris tenuistriata* M'Coy, 1844 from the Amvrosiyivka Formation (lower Bashkirian) in the core of borehole No. 2295 (depth interval 213.35–214.0 m) in Pokrovs'k Raion, Donetsk Oblast.

Specimens of *Dithyrocaris* sp. (here identified as *Dithyrocaris colei* Portlock, 1843) from the upper Bashkirian Mospyne Formation were figured by Dernov & Udovychenko (2019a, figs. 2.5, 2.9) and Dernov (2023, fig. 3). Poorly preserved specimens, defined as Phyllocarida indet., co-occurring with the probable phyllocarid resting trace fossil *Hankoichnus bandersnatchi* Dernov, 2023, are known from black shales in the lower Bashkirian part of the Dyakove Group in the southern part of the Luhansk Oblast (Dernov, 2023; Dernov & Poletaev, 2024).

The present paper outlines results of a study of a collection of relatively well-preserved phyllocarids assigned to *Dithyrocaris colei*, *D. cf. granulata* Woodward & Etheridge, 1873 and Phyllocarida indet. from the upper Bashkirian Mospyne Formation exposed in the southern part of Luhansk Oblast, eastern Ukraine. Arthropods from this formation comprise millipedes (Dernov, 2019a, 2019b, plus still undescribed material), horseshoe crabs (Dernov, 2019a, 2019b), trilobites (Weber, 1933; Mychko & Dernov, 2019), cyclids (Dernov, 2022c), conchostracans (Dernov & Udovychenko, 2021) and insects (Dernov, 2019a, 2019b). The novel data obtained clarify the taxonomic diversity of Pennsylvanian phyllocarids of the Donets Basin.

2. Geological setting

The fossils described in the present paper were collected by the author from three stratigraphical levels in the Mospyne Formation as exposed in the southern part of Luhansk Oblast (Fig. 1) in 2011–2013. A brief description of the phyllocarid-bearing stratigraphical levels is given below.

(1) A black shale bed, 55 m below limestone layer G_1^2 in the middle part of the Mospyne Formation (Fig. 2A, B). The shales (Fig. 2C) contain a rich assemblage of fossils, consisting of cnidarians (*Sphenothallus* sp.; Fig. 3L), brachiopods (*Orbiculoidea* sp.), gastropods, bivalves (species of the genera *Phestia* (Fig. 3F), *Sanguinolites* (Fig. 3G), *Palaeoneilo*, *Nuculopsis*, *Solenomorpha*, *Posidoniella*, *Euchondria* and others), orthocerids, coiled nautiloids, ammonoids (*Anthraceratites* sp.; Fig. 3I), Neodimorphoceratidae indet. (Fig. 3E), *Branneroceras* sp., fragments of ammonoid jaw apparatuses (Fig. 3J)), the phyllocarid *Dithyrocaris colei*, allochthonous terrestrial plants (species of the genera *Cyperites*, *Lepidostrobophyllum* (Fig. 3A), *Stigmara*, *Calamites*, *Cordaites*, *Mariopteris* and *Neuraethopteris*), fishes (Fig. 3K), macroscopic problematics (Fig. 3B, C, H) and trace fossils (*Chondrites*, *Phycosiphon*, *Planolites* (Fig. 3D) and bromalites) (Dernov & Udovychenko, 2019a; Dernov, 2022b; Dernov & Poletaev, 2024).

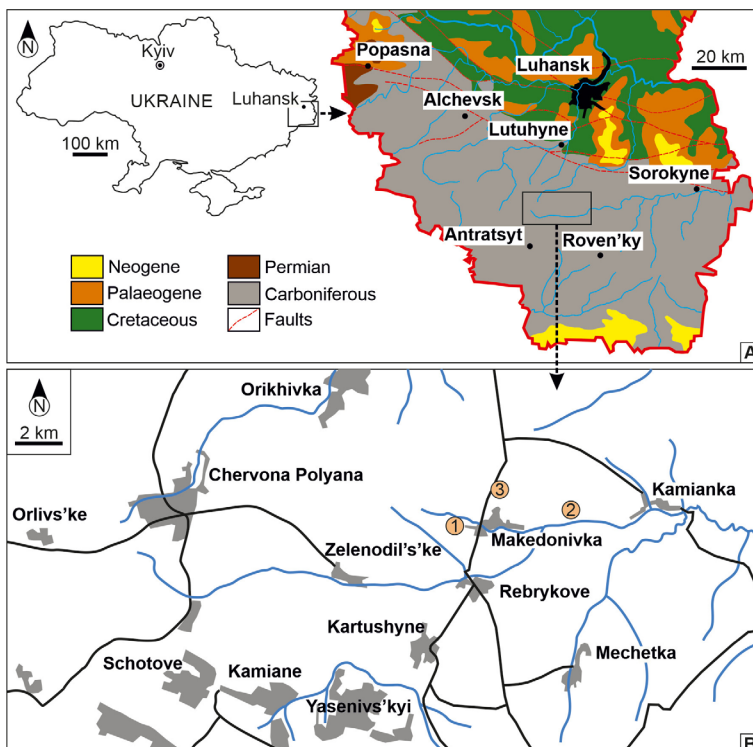


Fig. 1. Geographical location of sites yielding phyllocarids (orange circles).

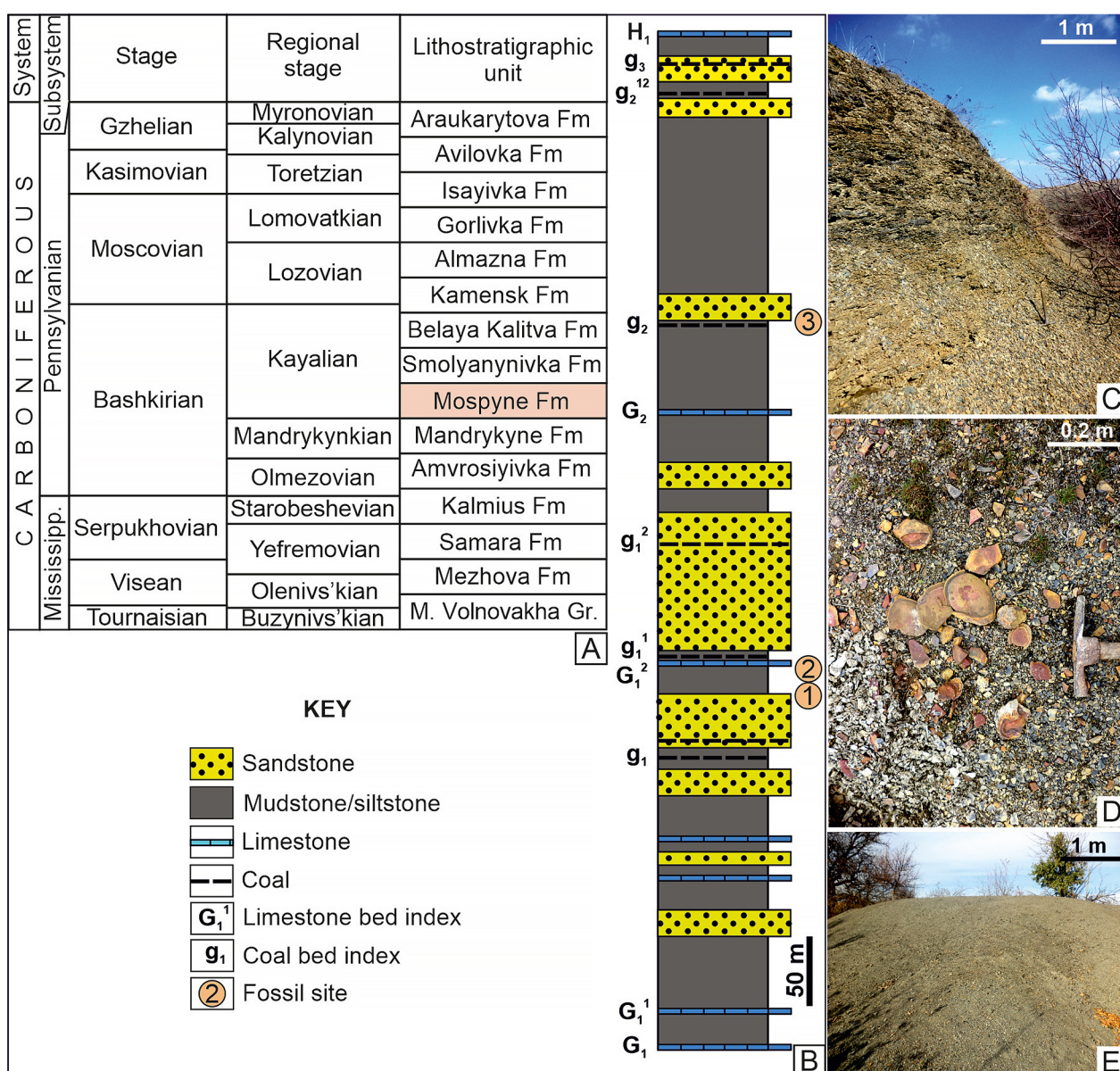


Fig. 2. Stratigraphical position and general view of the phyllocarid-bearing sites. **A** – Carboniferous stratigraphy of the Donets Basin (Mospyne Formation marked in orange); **B** – Section of the Mospyne Formation with stratigraphical position of phyllocarid-bearing levels; **C** – General view of fossil site no. 1; **D** – Phyllocarid-bearing nodules from the black shale bed of fossil site no. 1; **E** – General view of fossil site no. 3. Abbreviations: Fm – Formation, Gr. – Group, M. – Mokra.

The black shales lie on a bed of shallow-marine, calcareous, fine-grained sandstone with diverse fossils (for more details, see Mychko & Dernov, 2019; Dernov, 2022b). The deltaic sandstone bed with remains of diverse non-marine fauna, terrestrial plants and trace fossils (Dernov, 2019a) lies above the phyllocarid-bearing black shales. The phyllocarid remains occur mainly in the lowest part of the black shale bed, which is approximately 0.3 m thick. In this part of the bed, there is an interlayer of siderite nodules (Fig. 2D), from which the bulk

of the studied material comes. It should be noted that this interlayer is present in outcrops that are 3–4 km apart.

The shale bed is exposed in several areas at a distance of 3–4 km from each other near the village of Makedonivka (Luhansk Raion, Luhansk Oblast, Ukraine), but the bulk of the material studied was found in a small pit near the western outskirts of this village (co-ordinates: 48°13'58.3"N 39°16'24.8"E). In total, 23 phyllocarid specimens were collected from the black shale bed.

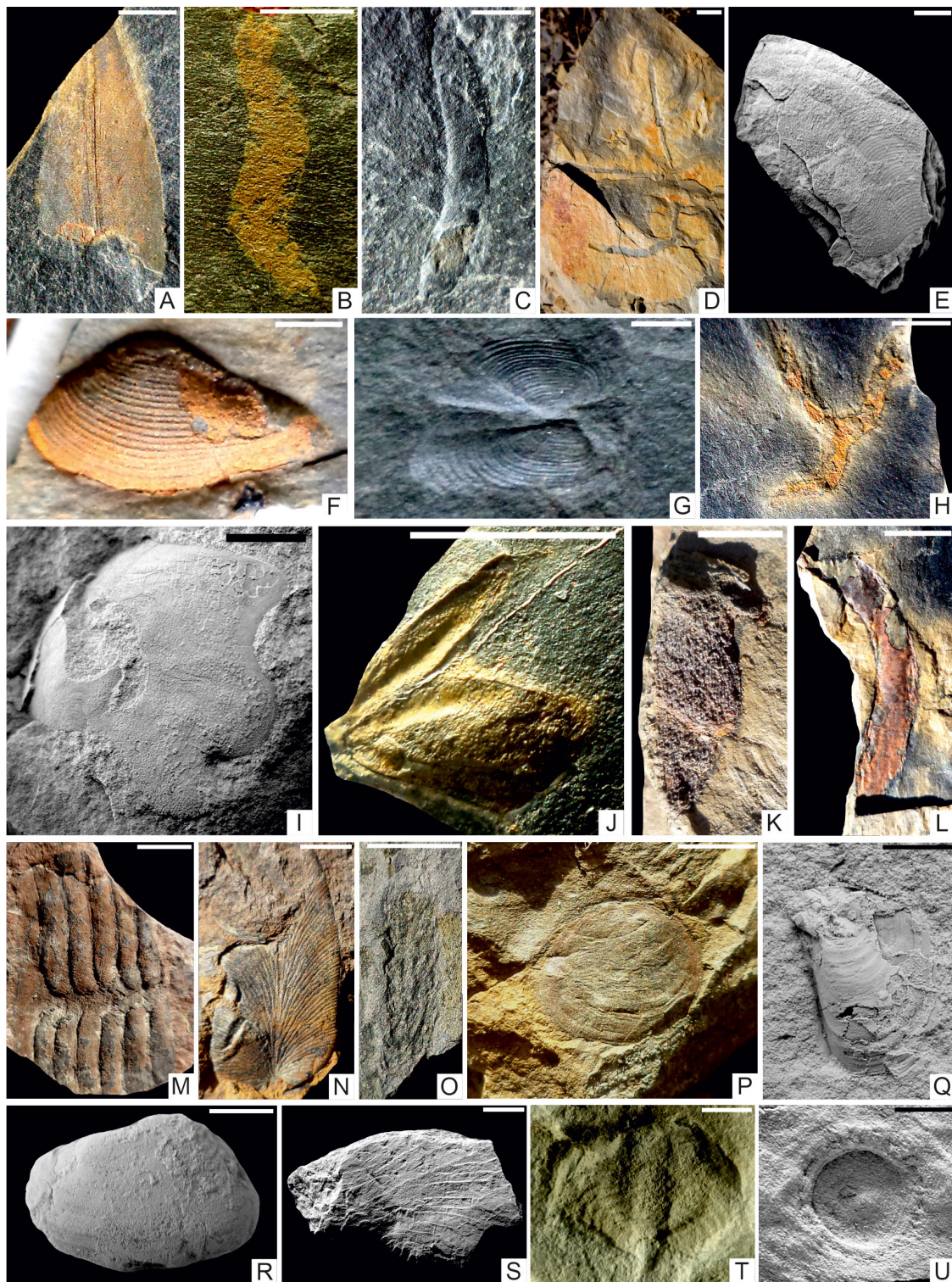


Fig. 3. Fossils co-occurring with phyllocarids at stratigraphical levels no. 1 (A-L) and no. 3 (M-U). A - Plant, *Lepidostrobophyllum* sp.; B, C - Soft-body(?) problematica; D - Burrows, *Planolites*; E - Ammonoid, Neodimorphoceratidae indet.; F - Bivalve, *Phestia* sp.; G - Bivalve, *Sanguinolites* sp.; H - Macroproblematicum, *Tanaisina maoka* Dernov, in Dernov & Poletaev, 2024; I - Ammonoid, *Anthracoceratites* sp.; J - Ammonoid jaw apparatus; K - Fragment of an indeterminate bone; L - Cnidarian, *Sphenothallus* sp.; M - Plant, *Calamites* sp.; N - Plant, *Paripteris gigantea* (Sternberg, 1823) Gothan, 1941; O - Plant, *Cordaianthus* sp.; P - Conchostracan crustacean, *Pseudestheria* sp.; Q - Bivalve, *Naiadites* sp.; R - Bivalve, *Carbonicola obtusa* (Hind, 1894); S - Insect, ?Orthoptera indet.; T - Horseshoe crab; U - Pseudofossil (gas-escape structure), *Astropolithon*. Scale bars equal 5 mm.

(2) A black shale bed with siderite nodules, 40 m below limestone layer G_1^2 in the middle part of the Mospyne Formation (see Fig. 2B). The mudstone contains rare brachiopods (lingulids, *Densepustula* sp. and other rare productidines), gastropods, bivalves (species of the genera *Phestia*, *Sanguinolites*, *Palaeoneilo*, *Solenomorpha* and others), orthocerids, coiled nautiloids (*Liroceras* sp., *Metacoceras perelegans* Girty, 1915 and *Peripetoceras* sp.), ammonoids (*Melvilloceras rotaii* (Librovitch, in Popov, 1979), *Branneroceras* sp., *Gastrioceras* sp. and ammonoid jaws), as well as allochthonous terrestrial plants (species of the genera *Calamites*, *Lepidostrobophyllum*, *Lepidodendron* and *Cordaites*), the problematicum *Coleolus*, as well as trace fossils (*Chondrites*, *Cyclopuncta*, faecal pellets and bromalites) (Dernov, 2022b, 2024a, 2024b). A single small fragment of the posterior part of a phyllocarid carapace (specimen GM LNU-45/24, not described; see Fig. 5G) preserved in a siderite nodule was found in this bed.

The shale bed is exposed in the Sukha Ravine, 2.5 km east of the village of Makedonivka (co-ordinates: 48°14'28.4"N 39°20'08.2"E).

(3) A roof shale of coal bed g_2 in the upper half of the Mospyne Formation (see Fig. 2B). Shale debris forming small rock dumps of the former small coal mines 1.5 km north of the village of Makedonivka (co-ordinates: 48°14'54.1"N 39°18'20.6"E; see Fig. 2E). Remains of terrestrial plants, including *Bothrodendron minutifolium* (Boulay, 1876) Zeiller, 1879, *Cyperites bicarinatus* Lindley & Hutton, 1832, *Lepidodendron* sp., *Lepidophloios laricinus* (Sternberg, 1820) Goldenberg, 1857, *Sigillaria elongata* Brongniart, 1828, *Stigmara ficoides* (Sternberg, 1820) Brongniart, 1822, *Syringodendron* cf. *alternans* Sternberg, 1820, *Calamariophyllum kidstoni* (Zalessky, 1907) Hirmer, 1927, *Calamites* sp. (see Fig. 3M), *Pinnularia cappilacea* Lindley & Hutton, 1834, *Dictyoxylon* sp., *Karinopteris acuta* (Brongniart, 1831) Boersma, 1972, *Paripteris gigantea* (Sternberg, 1823) Gothan, 1941 (see Fig. 3N), *Trigonocarpus* sp., *Cordaianthus* sp. (see Fig. 3O), *Cordaicarpus cordai* (Geinitz, 1861) Zeiller, 1888, *Cordaites principalis* (Germar, 1848) Geinitz, 1855, as well as the non-marine bivalves *Carbonicola obtusa* (Hind, 1894) (see Fig. 3R), *Curvirimula trapeziforma* (Dewar, 1939) and *Naiadites* sp. (see Fig. 3Q), the conchostracan *Pseudestheria* sp. (see Fig. 3P), horseshoe crabs (see Fig. 3T), a phyllocarid crustacean *Dithyrocaris* cf. *granulata*, a fragmentary impression of the wing base of a large insect (?Orthoptera indet., see Fig. 3S; identification by Joerg W. Schneider, Freiberg), terrestrial plants with biodamage of arthropods and pseudofossils (*Astropolithon*; see Fig. 3U) have been collected from this locality (Dernov, 2021, 2022a). In the roof shale, a single phyllo-

carid carapace positive impression was found, preserved in a sandy limonite nodule (specimen IGS NASU-41/01).

The Mospyne Formation comprises a 315- to 730-m-thick sequence of mudstones, siltstones, sandstones, limestones and coals (Aisenverg et al., 1975; Feofilova & Levenstein, 1963; Dunaeva, 1969; Poletaev et al., 2011; Nemyrovska & Yefimenko, 2013). The rocks of the formation are represented by shallow-marine, lagoonal, lacustrine, prodeltaic, deltaic, peat and clastic swamp deposits (Logvinenko, 1953; Feofilova & Levenshtein, 1963; Dernov, 2017, 2019a, 2019b, 2022a, 2022b).

The Mospyne Formation corresponds to the lower part of the Kayalian Regional Stage of the Regional Stratigraphic Scheme of the Dnipro-Donets Downwarp (Poletaev et al., 2011; Nemyrovska & Yefimenko, 2013; see Fig. 2A). The formation contains typical Langsettian (= Westphalian A, early late Bashkirian) terrestrial plants (Novik, 1974; Dernov & Udovychenko, 2019b) and ammonoids of the *Branneroceras-Gastrioceras* Genozone (Popov, 1979; Dernov, 2022b), non-marine bivalves of the upper part of the *lenisulcata* Zone and the lower part of the *communis* Zone (Dernov, 2022a), late Bashkirian conodonts (Nemyrovska, 1999) and other marine and terrestrial biota including miospores, foraminifera, corals, bryozoans, brachiopods, scaphopods, gastropods, horseshoe crabs, millipedes, insects and fishes (Poletaev et al., 2011; Nemyrovska & Yefimenko, 2013).

Bashkirian-aged coal-bearing deposits in the Donets Basin accumulated mainly in a large alluvial-deltaic plain, which was flooded periodically by epicontinental seas (Logvinenko, 1953; Feofilova & Levenshtein, 1963; Ustinovsky, 1993), located along the south-eastern margin of Laurussia. Only the central part of the Donets Basin was characterised by a continuous regime of marine sedimentation during the Bashkirian (Reznikov, 1993; Dernov & Poletaev, 2024). This plain was located in a humid tropical and/or subtropical climate (Novik, 1952, 1974; Logvinenko, 1953; Fissunencko, 2000).

3. Material and methods

A total 25 moderately well- and poorly preserved specimens (GM LNU-45/01 to GM LNU-45/24 and IGS NASU-41/01), comprising articulated carapaces, separated valves, telsons with furcae and other parts of phyllocarid exoskeletons were examined. The material studied is stored in the Geological Museum of the Luhansk Taras Shevchenko National University, Poltava (collection GM LNU-

45) and in the Department of Palaeontology and Stratigraphy of the Palaeozoic Sediments, Institute of Geological Sciences of the NAS of Ukraine, Kyiv (collection IGS NASU-41).

The material was collected both by extracting siderite nodules with phyllocarid remains from the outcrop face (phyllocarid-bearing levels no. 1 and 2) and by searching for these nodules in black shale rock dumps (phyllocarid-bearing levels no. 1 and 3). Remains from the nodules are the best preserved in the collection studied, while in the nodule-bearing shale they are fragmentary. However, this circumstance may be an artefact of collecting, as black shales break up into very small pieces during collection and weathering, while ellipsoidal nodules with phyllocarid remains are often relatively large, reaching a diameter of 15 cm.

Abbreviations used in the "Systematic palaeontology" section below are as follows: L – midline length of carapace, W – maximum width of carapace, L_T – length of telson, L_F – length of furcae.

4. Systematic palaeontology

Phylum Arthropoda Gravenhorst, 1843
 Class Malacostraca Latreille, 1806
 Subclass Phyllocarida Packard, 1879
 Order Archaeostraca Claus, 1888
 Suborder Rhinocarina Clarke, in Zittel, 1900
 Family Rhinocarididae Hall & Clarke, 1888

Genus *Dithyrocaris* Scouler, in Portlock, 1843

Type species. *Argus testudineus* Scouler, 1835, by subsequent designation of Bronn & Roemer (1850).

Diagnosis. See Rolfe (1969: p. R321).

Distribution. Devonian–Pennsylvanian of Europe and North America.

Dithyrocaris colei Portlock, 1843

Figs 4A–K, 5A–F; Table 1

1843 *Dithyrocaris Colei* Portlock, p. 314, pl. 12.

1898 *Dithyrocaris Colei*: Jones & Woodward, p. 103, pl. 22, fig. 7; pl. 23, figs 1–4; pl. 24, figs 2, 4; pl. 27, fig. 5.

1961 *Dithyrocaris colei*: Krestovnikov, p. 25, pl. 3, fig. 6; pl. 5, fig. 3.

cf. 1984 *Dithyrocaris* sp.: Brauckmann, p. 105, fig. 1.

cf. 1997 *Dithyrocaris* sp. n. Rolfe et Richardson: Schram et al., p. 165, figs 12.30–12.32.

2019 *Dithyrocaris* sp.: Dernov & Udovychenko, figs. 2.5, 2.9.

2023 *Dithyrocaris* sp.: Dernov, fig. 3.

Table 1. Dimensions (in mm) of *Dithyrocaris colei* Portlock, 1843.

Specimen	L	W	L/W	L_T	L_F
GM LNU-45/04	20.04	22.1	0.91	–	–
GM LNU-45/02	26.5	23.4	1.13	–	–
GM LNU-45/01	35.2	35.4	0.99	–	–
GM LNU-45/05	35.9	37.5	0.96	–	–
GM LNU-45/09	–	–	–	12.6	12.5
GM LNU-45/10	–	–	–	c. 7.4	7.3

Material. Twenty-three fragments of poorly to moderately preserved, flattened articulated carapaces, isolated valves, pleomeres and telsons with furcae preserved in siderite nodules and black shale of the phyllocarid-bearing stratigraphical interval no. 1 (specimens GM LNU-45/01 to GM LNU-45/23).

Description. Valves with an approximate length/width ratio of 1.82–2.26 (mean: 2.0), relatively narrowly rounded or slightly concave anteriorly, with a posterior shallow swing; posterior margin inclined posteroventrally (Fig. 4D). Straight, narrow pointed posteroventral spine occurring on mid-posterior margin (Fig. 4E, H). Dorsal contact margin straight. Ventral margins broadly rounded. Narrow border, gradually thickening from posterior to anterior margin, present along ventral valve margin. Maximum width occurring near mid-length. General carapace outline slightly longitudinally ellipsoidal with gradual slight narrowing towards anterior margin and with slight excess of carapace length over width; posterior margin bearing wide, short spine (Fig. 4A, B).

Mesolateral carinae of carapace well developed, arcuate, slightly pointed; extending from cephalic carinae and produced into posteroventral spine (Fig. 4H). Juxtadorsal carinae more weakly developed than mesolateral carinae, pointed, extended and gradually moving away from dorsal hinge line, from posterior margin of nuchal carina almost to posterior margin of carapace valve. Entire carapace surface smooth, although in some areas of carapaces studied (e.g. Fig. 4C) rather coarse wrinkles occur; these may be a taphonomic artefact.

Specimen GM LNU-45/16 has relatively large mandibles (Fig. 5E, F), but due to poor preservation and partial overlap with hard-to-remove siderite, these cannot be described.

Most abdominal segments, except for last one, not preserved. Last (seventh) pleomere (Fig. 5C) partially studied; surface covered with coarse striae extending posteriorly under oblique angle from narrow, dorsal carina. Telson long and slender, with indistinct dorsal carina (Figs 4I–K, 5A). Furcae coarsely striate longitudinally, long and slender,

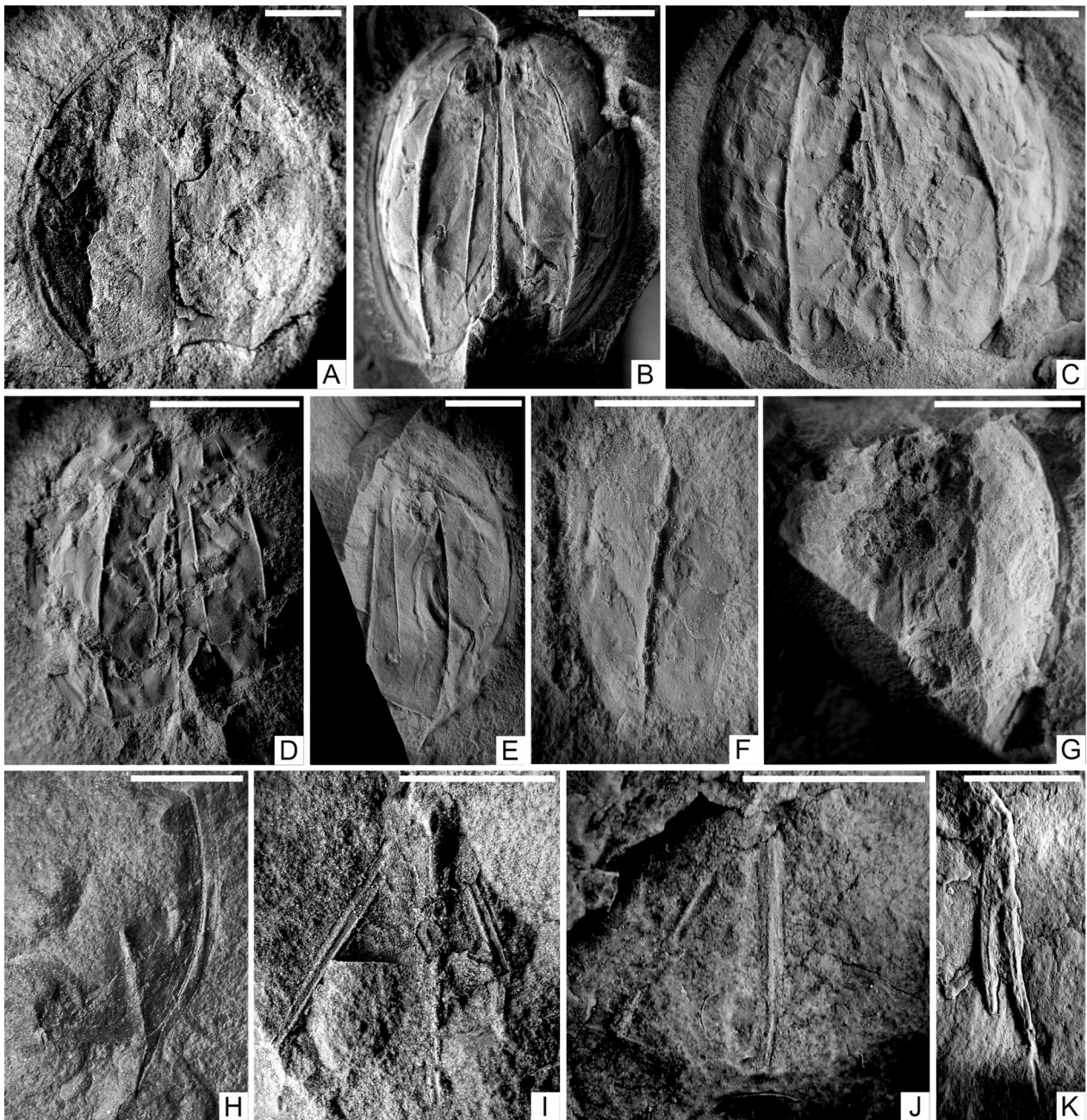


Fig. 4. *Dithyrocaris colei* Portlock, 1843 from the Mospyne Formation of the Donets Basin. **A-D** – Articulated carapaces in dorsal views (**A** – GM LNU-45/01; **B** – GM LNU-45/02; **C** – GM LNU-45/03; **D** – GM LNU-45/04); **E** – Right valve, GM LNU-45/05 in dorsal view; **F** – Fragment of left valve, GM LNU-45/06 in dorsal view; **G** – Articulated carapace in dorsal view (GM LNU-45/07); **H** – Posterior part of right valve, GM LNU-45/08 showing posteroventral spine; **I-K** – Telsons with furcae (**I** – GM LNU-45/09; **J** – GM LNU-45/10; **K** – GM LNU-45/11). Scale bars equal 5 mm.

probably about same length as telson. Telson and furcae not decorated with any setae.

Remarks. The morphology of this species conforms with that of the genus *Dithyrocaris*, with all important morphological features matching the generic diagnosis presented by Rolfe (1969: p. R321). The present specimens are morphologically closely similar to individuals of *Dithyrocaris colei* illustrated

by e.g. Jones & Woodward (1898: pl. 22, fig. 7; pl. 23, figs 1–4; pl. 24, figs 2, 4; pl. 27, fig. 5). The sole morphological difference involves the better-developed juxtadorsal carinae in the present material. However, it is likely that this morphological feature falls within the range of intraspecific variation.

Dithyrocaris colei differs from the morphologically similar species, *Dithyrocaris tricornis* (Sculer,

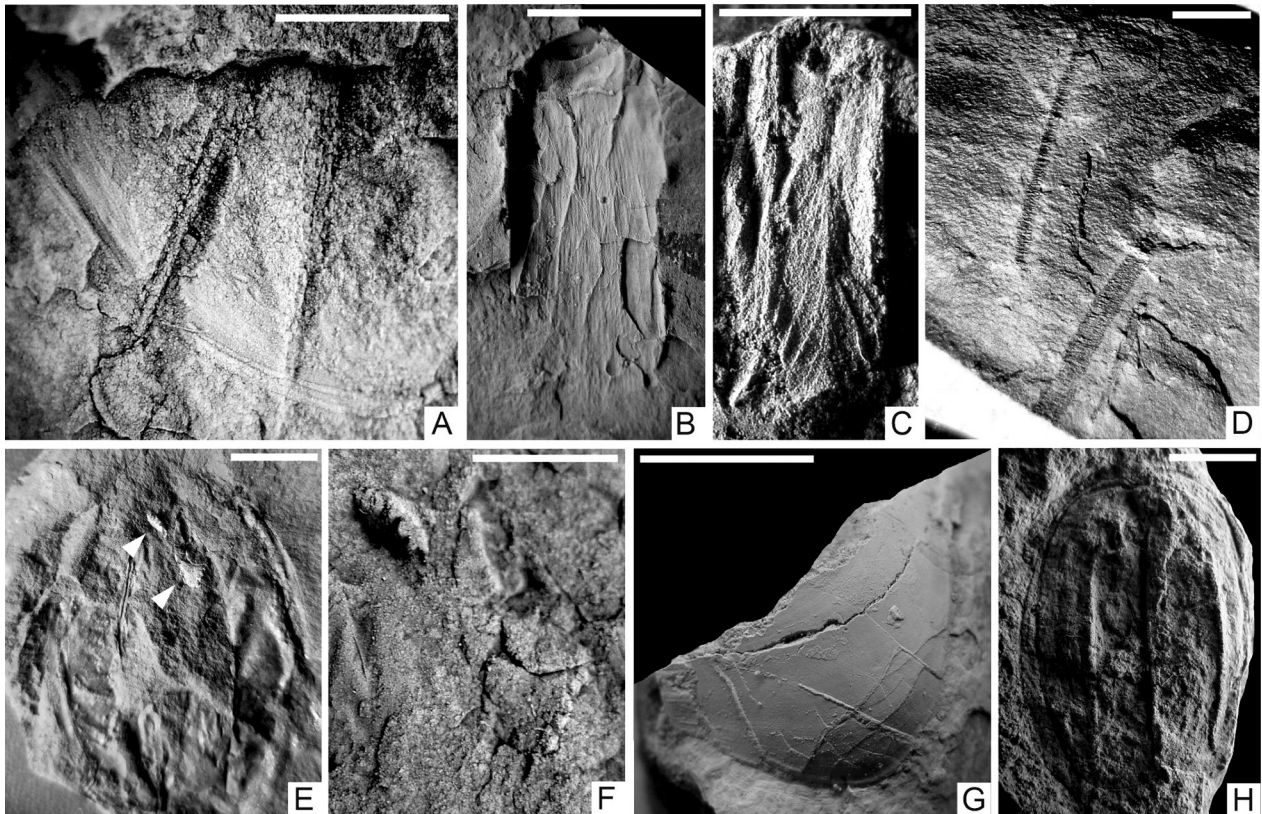


Fig. 5. *Dithyrocaris colei* Portlock, 1843 (A-F), Phyllocarida indet. (G) and *Dithyrocaris* cf. *granulata* Woodward & Etheridge, 1873 (H) from the Mospyne Formation of the Donets Basin. A - Telson with furcae, GM LNU-45/12; B, C - Last abdominal segments (B - GM LNU-45/13; C - GM LNU-45/14); D - Antennal exopod, GM LNU-45/15; E, F - Poorly preserved mandibles, GM LNU-45/16 (E - indicated by white arrows, F - enlarged); G - posterior part of right valve in dorsal view (GM LNU-45/24); H - Articulated carapace, IGS NASU-41/01 in dorsal view. Scale bars equal 5 mm.

1835), in the absence of tubercles on the surfaces of the mesolateral and juxtadorsal carinae and on the surface of the valve between them. *Dithyrocaris colei* differs from *Dithyrocaris quinni* Copeland, 1967 by a straight dorsal contact line, the presence of juxtadorsal carinae and a smooth dorsal carapace surface. In addition, *Dithyrocaris colei* can be differentiated from *Dithyrocaris rolfei* Schram & Horner, 1978 by the smooth surface of the valves; in *D. rolfei* these are covered with fine, 'hair-like' ornamentation.

It is impossible to compare carapaces of *Dithyrocaris colei* and *Dithyrocaris carbonarius* Meek & Worthen, 1870 from the Pennsylvanian of Illinois (USA), because the latter is described only from a telson with furcae, which in that species are much thicker than those of *Dithyrocaris colei*. The main morphological difference between *Dithyrocaris colei* and *D. testudineus* (Scouler, 1835) (= *Dithyrocaris scouleri* M'Coy, 1844, according to Woodward & Etheridge, 1873, p. 482) is the absence of juxtadorsal carinae in the latter species, in addition to some other, less obvious morphological features. Moreover,

D. testudineus has a complex carapace ornamentation, while specimens of *Dithyrocaris colei* described here have a smooth carapace surface. The telson and furcae in *Dithyrocaris testudineus* are thicker than in *Dithyrocaris colei*.

There are no significant morphological differences between specimens from the upper Bashkirian of the Donets Basin here referred to *Dithyrocaris colei* and those recorded by Krestovnikov (1961), except for much better-developed juxtadorsal carinae in the present individuals in comparison to the single valve described by Krestovnikov. It should be noted that *Dithyrocaris colei* described by Krestovnikov (1961) came from approximately the same stratigraphical interval (i.e. upper Bashkirian, Mospyne-Belaya Kalitva formations) as the material described here.

Distribution. Serpukhovian of England, Scotland, Ireland and, possibly, France. In the Donets Basin, this species is known from the upper Bashkirian (Krestovnikov, 1961; present study) and probably also in Germany.

Dithyrocaris cf. *granulata* Woodward & Etheridge, 1873

Fig. 5H

Material. A single specimen (IGS NASU-41/01) of a moderately preserved positive impression of a flattened articulated carapace, from the phyllocarid-bearing stratigraphical interval no. 3.

Description. IGS NASU-41/01, an articulated carapace, measuring 20 mm in length and 15 mm in width, with longitudinally ellipsoidal outline and maximum width occurring near mid-length. Valves with approximate length/width ratio of 2.67, relatively narrowly rounded anteriorly, with posterior shallow swing and narrow, straight and pointed posteroventral spine on mid-posterior margin. Dorsal contact margin straight. Ventral margins broadly rounded with narrow border, gradually thickening from 0.5 to 1.5 mm, from posterior to anterior margin. Mesolateral carapace carinae well developed, arcuate, slightly pointed; extending from cephalic carinae and produced into posteroventral spine. Valve surface ornamentation absent or not preserved.

Remarks. Morphologically speaking, IGS NASU-41/01 does not differ significantly from carapaces of *Dithyrocaris granulata* described by Woodward & Etheridge (1874: pl. 5, figs 2, 3) and Jones & Woodward (1898: pl. 18, figs 4–6; pl. 19, figs 5, 6; pl. 20, figs 1–3). However, in view of the fact that the fine carapace ornamentation cannot be seen in the present specimen assignment to *Dithyrocaris granulata* is with a query.

5. Discussion and concluding remarks

In the Carboniferous succession of the Donets Basin, phyllocarids are distributed predominantly in the Bashkirian interval (Fig. 6), where *Dithyrocaris tenuistriata* (see Krestovnikov, 1961), *D. colei* (see Krestovnikov, 1961; present study), *D. cf. granulata* (present study) and Phyllocarida indet. (Dernov, 2023; Dernov & Poletaev, 2024; present study) have been recorded. *Ceratiocaris* sp. (undescribed material; see Fig. 6D) has been recorded from the Serpukhovian/Bashkirian boundary interval of the southern Donets Basin.

Only two taxa, *Dithyrocaris granulata doneziana* Riabinin, 1921 and *D. tricornis aisenvergi* Krestovnikov, 1961, are known from beyond the Bashkirian interval, occurring in the Serpukhovian and Upper Pennsylvanian, respectively (Riabinin, 1921; Krestovnikov, 1961). The latter subspecies differs from the nominal species, *D. tricornis* (Scouler, 1835), by its wrinkled ornamentation and the

absence of tubercles on the surface of the valves (Krestovnikov, 1961).

In summary, Carboniferous phyllocarids from the Donets Basin are represented by only two genera, *Dithyrocaris* and *Ceratiocaris* M'Coy, 1849. *Dithyrocaris* is a relatively widely distributed genus in Carboniferous strata across Europe (Scouler, 1835; Portlock, 1843; M'Coy, 1844; Armstrong, 1865; Woodward, 1865, 1871; Woodward & Etheridge, 1873, 1874; Etheridge, 1879; Jones & Woodward, 1887–1899; Carpentier, 1913; Riabinin, 1921; Van Straelen, 1933; Currie et al., 1937; Krestovnikov, 1961; Brauckmann, 1984; Schraut, 1999) and North America (Meek & Worthen, 1870; Copeland, 1967; Copeland & Rolfe, 1978; Schram & Horner, 1978; Schram J.M., 1980; Schram et al., 1997) and represented by at least 18 species, many of which were described on the basis of poorly preserved, fragmentary fossils.

An analysis of available palaeontological and lithological data allows us to state that the lower part of the shale bed in the phyllocarid-bearing stratigraphical level no. 2, which yielded *Dithyrocaris colei*, formed in a shelf environment characterised by low depositional rates and a calm hydrodynamic regime. This is confirmed by the lithological composition of the strata, the presence of infaunal organisms (some bivalves and the problematicum *Coleolus*) and cnidarians of the genus *Sphenothallus*, the occurrence of faecal pellet accumulations and more. This part of the inundated area was contaminated with hydrogen sulphide in the sediments and, probably, in the lowermost part of the water column. However, the presence of hydrogen sulphide in the water column is deemed unlikely, because bivalves (e.g. *Phestia*) and other benthic animals would not have existed here. According to this, the black shales described do not differ significantly from other Palaeozoic black shale strata (compare Zangerl & Richardson, 1963; Antia & Wood, 1977; Quinn, 1977; Barron & Etensohn, 1981; Kammer et al., 1986; Thompson & Newton, 1987; Wignall, 1994; Malinky & Heckel, 1998; Boyer & Droser, 2007, 2009; Nyhuis et al., 2015).

The remaining shales formed under prodeltaic conditions, deposition being marked by delta progradation, which can be clearly seen, for example, in sediment coarsening in the upper part of the shale succession and their overlapping with a thick deltaic sandstone bed.

Biota associated with *Dithyrocaris* cf. *granulata* include terrestrial plants, non-marine horseshoe crabs and bivalves belonging to the genera *Naiadites* and *Curvoirimula*, insects and conchostracans, all indicative of freshwater environments. *Naiadites*

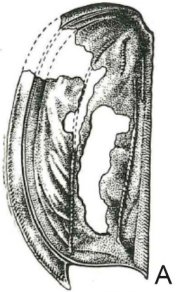




System	Subsystem	Stage	Lithostratigraphic unit	Taxa	Some phyllocarids	
CARBONIFEROUS	PENNSYLVANIAN	Gzhelian	Araukarytova Formation		 A  B  C  D  E	
			Avilovka Formation			?
		Kasimovian	Isayivka Formation			
			Gorlivka Formation			
		Moscovian	Almazna Formation			
			Kamenskaya Formation			
			Belaya Kalitva Formation			
		Bashkirian	Smolyanynivka Formation			
			Mospyne Formation			
			Mandrykyne Formation			
			Amvrosiyivka Formation			
			Kalmius Formation			
	MISSISSIPPIAN	Serpukhovian	Samara Formation			
			Mezhova Formation			
		Tournaisian	Mokra Volnovakha Group			

Fig. 6. Stratigraphical distribution of phyllocarid taxa in the Carboniferous succession of the Donets Basin. **A** – *Dithyrocaris tricornis aisenbergi* Krestovnikov, 1961 (after Krestovnikov, 1961: pl. 3, fig. 7); **B** – *Dithyrocaris colei* Portlock, 1843 (after Krestovnikov, 1961: pl. 3, fig. 6); **C** – *Dithyrocaris tenuistriata* M'Coy, 1844 (after Krestovnikov, 1961: pl. 3, fig. 5); **D** – *Ceratiocaris* sp. (undescribed specimen, collections of the Institute of Geological Sciences of the NAS of Ukraine, Kyiv); **E** – *Phyllocarida* indet. (after Dernov, 2023: fig. 2b). Abbreviation: D. – *Dithyrocaris*.

and *Curvoirimula* (Betekhtina, 1974; Anderson et al., 1997) are possible indicators of brackish settings. Lithological features of the fossil-bearing rocks (e.g., black colour, presence of pyrite and limonite concretions) are evidence of dysaerobic palaeoenvironments.

Dithyrocaris cf. *granulata* and other fossils were collected from the dumps of small mines; consequently, they probably originated from different parts of the roof shale of coal seam g_2 . As a rule, roof shales of coal beds in the Donets Basin consist of several interlayers differing in depositional conditions (Chernyshev, 1931; Yefimov, 1934; Logvinenko, 1953; Posudiyevsky, 1977; Dernov, 2022a), namely: (1) swamp (in the lower part) and lacustrine (in the upper part) black mudstones and siltstones with frequent plant debris, non-marine bivalves and conchostracans; (2) shallow-marine and brackish black mudstones and siltstones with lingulid brachiopods, marine bivalves and ostracods; (3) offshore marine shales with bivalves, gastropods, ammonoids and other fauna. Apparently, the phyllocarid *Dithyrocaris* cf. *granulata* originated from shallow-marine and brackish shales of interlayer no. 2, as brackish-water fauna predominates in the present collection, while undoubtedly non-marine organisms (e.g. the bivalve *Carbonicola* and horseshoe crabs *Euproops*) are of subordinate importance.

Almost all phyllocarid records from the Carboniferous of the Donets Basin (see Fig. 6) are confined to black shales formed under dysaerobic marine conditions (Krestovnikov, 1961; Dernov & Udovychenko, 2019a; Dernov, 2023; Dernov & Poletaev, 2024). The palaeoenvironmental context of *Dithyrocaris granulata doneziana* Riabinin, 1921 from the Kalmius Formation is slightly unclear. Limestone bed D_1 of the Kalmius Formation (in modern nomenclature, limestone bed D_1^5), which yielded this subspecies, contains a rich marine biota comprising calcareous algae, foraminifera, corals, bryozoans, brachiopods, bivalves, gastropods, cephalopods, crinoids, echinoids, etc., and forms a relatively small bioherm (Aisenverg et al., 1987; Poletaev et al., 1988). It is possible that *Dithyrocaris granulata doneziana* came from the shale bed separating the limestone beds of the D_1 limestone group consisting of five beds, from D_1 to D_1^5 (Poletaev & Vdovenko, 2013). However, it should be noted that relatively large (6–8 mm long) isolated mandibles, not yet studied in detail, have been found in some Bashkirian-aged limestone beds in the Donets Basin.

Acknowledgements

I wish to thank Dr Markus Poschmann (General Direction for Cultural Heritage of Rhineland-Palatinate, Mainz) for help with rare literature items and am also grateful to the reviewers, Dr Russell Bicknell (American Museum of Natural History, New York) and Dr Julien Kimmig (Staatliches Museum für Naturkunde, Karlsruhe), whose comments and suggestions have improved the quality of the final version of the manuscript. This research was supported within the framework of the programme "Late Precambrian and Phanerozoic biota of Ukraine: biodiversity, revision of systematic composition and phylogeny of leading groups" (no. 0122U001609).

References

- Aisenverg D.Ye., Belenko N.G., Dedov V.S., Levenshtein M.L., Makarov I.A., Nesterenko L.P., Poletaev V.I., Popov V.S., Sokolova G.U., Fissunencko O.P. & Shchegolev A.K., 1975. *Stratigraficheskaya ekskursiya* [Stratigraphic excursion]. [In:] Aisenverg D.Ye., Lagutina V.V., Levenshtein M.L. & Popov V.S. (Eds): *Putevoditel' ekskursii po Donetskomu basseynu* [Field excursion guidebook for the Donets Basin]. Nauka, Moscow, 201–245.
- Aisenverg D.Ye., Belenko N.G., Berchenko O.I., Brazhnikova N.Ye., Vasilyuk N.P., Vdovenko M.V., Nemirovskaya T.I. & Poletaev V.I., 1987. *Parastratotipicheskiy razrez verkhneserpukhovskikh otlozheniy v Donetskom basseyne* [Parastratototype section of the upper Serpukhovian deposits in the Donets Basin]. Institute of Geological Sciences of the Academy of Sciences of the Ukrainian SSR, Kyiv, 48 pp.
- Anderson L.I., Dunlop J.A., Horrocks C.A. Winkelman, H.M. & Eagar R.M.C., 1997. Exceptionally preserved fossils from Bickershaw, Lancashire UK (Upper Carboniferous, Westphalian A (Langsettian)). *Geological Journal* 32, 197–210.
- Antia D.D.J. & Wood B.A., 1977. Some aspects of the palaeoecology of the E1b Zone of the Edale shales (Namurian) in the Edale Valley, Derbyshire. *Mercian Geologist* 6, 179–196.
- Armstrong J., 1865. Note on the discovery of the teeth of *Dithyrocaris*. *Transactions of the Geological Society of Glasgow* 2, 73–74.
- Barron L.S. & Etensohn F.R., 1981. *Paleoecology of the Devonian-Mississippian black-shale sequence in Eastern Kentucky with an atlas of some common fossils: technical report. Prepared for US Department of Energy, Morgantown Energy Technology Center Morgantown, West Virginia Under Contract No. DE-AC21-76ET12040*. 74 pp.
- Batalina M.A., 1933. *Nizhnekamennougolnye Ostracoda s r. Kal'mius (Donetskiy basseyn)* [Lower Carboniferous Ostracoda from the Kalmius river section (Donets Basin)]. *Transactions of the All-Union geological geological exploration association NKTP USSR* 332, 1–32.
- Betekhtina O.A., 1974. *Biostratigrafiya i korrelyatsiya uglenosnykh otlozheniy pozdnego paleozoya po nemorskim dvustvorkam* [Non-marine bivalves, biostratigraphy and

- correlation of the Late Paleozoic Coal Measures]. Nauka, Novosibirsk, 178 pp.
- Birshtein Ya.A., 1966. Zametki o verkhenpaleozoiskikh vyshchikh rakoobraznykh (Malacostraca) SSSR. Pygocephalomorpha [Notes on the Palaeozoic malacostracans (Malacostraca) of the USSR. Pygocephalomorpha]. *Paleontological Journal* 2, 49–56.
- Boersma M., 1972. *The heterogeneity of the form genus Marriopteris Zeiller. A comparative morphological study with special reference to the frond composition of West-European species*. Elinkwijk, Utrecht, 172 pp.
- Bondarchuk V.G., 1929. Do geologii dolishnyo-karbonovykh vapnyakiv Velyko-Anadol's'kogo raionu [On the geology of the Lower Carboniferous limestone sequence of the Velykyi Anadol Raion]. *Transactions of the Ukrainian Geological Institute* 3, 152–158.
- Boulay N.-J., 1876. *Le terrain houiller du Nord de la France et ses végétaux fossils [The coalfields of Northern France and their fossil plants]*. Thèse de Géologie. Lefebvre-Ducrocq, Lille, 74 pp.
- Boyer D.L. & Droser M.L., 2007. Devonian monospecific assemblages: new insights into the ecology of reduced-oxygen depositional settings. *Lethaia* 40, 321–333.
- Boyer D.L. & Droser M.L., 2009. Palaeoecological patterns within the dysaerobic biofacies: Examples from Devonian black shales of New York State. *Palaeogeography, Palaeoclimatology, Palaeoecology* 276, 206–216.
- Brauckmann C., 1984. Phyllocariden-Reste (Crustacea) aus dem Ober-Karbon von Witten-Herbede (Ruhr-Gebiet). *Jahresberichte des Naturwissenschaftlichen Vereins in Wuppertal* 37, 104–107.
- Briggs D.E.G., Rolfe W.D.I., Butler P.D., Liston J.J. & Ingham J.K., 2011. Phyllocarid crustaceans from the Upper Devonian Gogo Formation, Western Australia. *Journal of Systematic Palaeontology* 9, 399–424.
- Brongniart A., 1822. Sur la classification et la distribution des végétaux fossils [On the classification and distribution of fossil plants]. *Mémoires du Muséum National d'Histoire naturelle* 8, 203–240, 297–348.
- Brongniart A., 1828–1838. *Histoire des végétaux fossiles ou recherches botaniques et géologiques sur les végétaux renfermés dans les divers couches du globe [History of fossil plants or botanical and geological research on plants found in the various layers of the globe]*. Vol. 1–2. G. Dufour et Ed. d'Ocagne, Paris, 488 pp.
- Bronn H.G. & Roemer F., 1850–1856. *H.G. Bronn's Lethaea Geognostica. Dritte stark vermehrte Auflage [H.G. Bronn's Lethaea Geognostica. Third greatly enlarged edition]*. E. Schweizerbart'sche Verlagsbuchhandlung, Stuttgart, 412 pp.
- Carpentier A., 1913. Contribution à l'étude du Carbonifère du Nord de la France [Contribution to the study of the Carboniferous Period of Northern France]. *Mémoires de la Société Géologique du Nord* 7, 323–354.
- Chernyshev B.I., 1924. Ostracoda iz kamennougol'nykh otlozheniy Donetskogo basseyna i nekotorykh drugikh rayonov Rossii. Zametka 3. O *Leperditia* iz nizhnego otdela kamennougol'noy podsistemy [Ostracoda from the Carboniferous of the Donets Basin and some other regions of Russia. Part 3. On *Leperditia* from the Lower Carboniferous of the Donets Basin]. *Proceedings of the Yekaterinoslav Mining School*, 133–150.
- Chernyshev B.I., 1925. O novom rode *Scythia* [On the new genus *Scythia*]. *Proceedings of the Ukrainian Department of the Geological Committee* 6, 93–101.
- Chernyshev B.I., 1927. Ob *Estheria* i *Estheriella* iz Donetskogo basseyna [On *Estheria* and *Estheriella* from the Donets Basin]. *Yearbook of the Russian Palaeontological Society* 6, 67–82.
- Chernyshev B.I., 1928. Yeshche o Phyllopoda i Xiphosura Donetskogo basseyna [More on Phyllopoda and Xiphosura of the Donets Basin]. *Proceedings of the Geological Committee* 47, 519–533.
- Chernyshev B.I., 1931. *Carbonicola, Anthracomya i Najadites Donetskogo basseyna [Carbonicola, Anthracomya and Najadites of the Donets Basin]*. Publishing House of the Main Geological Department, Moscow and Leningrad, 126 pp.
- Chernyshev B.I., 1939. *Rakoobraznye [Crustaceans]*. [In:] Gorsky I.I. (Ed.): Atlas rukovodiashchikh form iskopaemykh faun SSSR. Tom 5. Sredniy i verkhniy karbon [Atlas of index fossils of the USSR. Volume 5. Middle and Upper Carboniferous]. GONTI, Moscow, 141–144.
- Chernyshev B.I., 1941. *Crustacea*. [In:] Librovitch L.S. (Ed.): Atlas rukovodiashchikh form iskopaemykh faun SSSR. Tom 4. Nizhniy otdel kamennougol'noy sistemy [Atlas of index fossils of the USSR. Volume 4. Lower Carboniferous]. GONTI, Moscow, 154–157.
- Claus C., 1880. *Grundzüge der Zoologie, zum wissenschaftlichen gebrauche [Principles of zoology, for scientific use]*. N.G. Elwert'sche Verlagsbuchhandlung, Marburg, 822 s.
- Claus C., 1888. Über den Organismus der Nebaliden und die systematische Stellung der Leptostraken [On the organism of the Nebalids and the systematic position of the Leptostracs]. *Arbeiten aus dem zoologische Institut der Universität Wien und der zoologischen Station in Triest* 8, 1–148.
- Collette J.H. & Hagadorn J.W., 2010. Early evolution of phyllocarid arthropods: phylogeny and systematics of Cambrian-Devonian archaeostracans. *Journal of Paleontology* 84, 795–820.
- Copeland M.J., 1967. A new species of *Dithyrocaris* (Phyllocarida) from the Imo Formation, Upper Mississippian, of Arkansas. *Journal of Paleontology* 41, 1195–1196.
- Copeland M.J. & Rolfe W.D.I., 1978. Occurrence of a large phyllocarid crustacean of Late Devonian-Early Carboniferous age from Yukon Territory. *Geological Survey of Canada Paper* 78, 1–5.
- Currie E.D., Duncan C. & Muir-Wood H.M., 1937. The fauna of Skipsey's marine band. *Transactions of the Geological Society of Glasgow* 19, 413–452.
- Dernov V., 2017. Stromatolity iz bashkyrs'kykh vidkladiv Donetskoho baseynu [Stromatolites from the Bashkirian of the Donets Basin]. *Visnyk of the Taras Shevchenko National University of Kyiv. Geology* 76, 6–13.
- Dernov V., 2019a. Taphonomy and paleoecology of fauna and flora from deltaic sandstones of the Mospinka Formation (Middle Carboniferous) of the Donets Basin. *GEO&BIO* 18, 37–63.

- Dernov V.S., 2019b. K izucheniyu nemorskoï fauny mospinskoi svity (sredniy karbon, Donbass) [On the study of the non-marine fauna of the Mospino Formation (Middle Carboniferous, Donets Basin)]. *Tectonics and Stratigraphy* 46, 105–115.
- Dernov V., 2021. The earliest insect endophytic oviposition (Early Pennsylvanian, Eastern Ukraine). *Visnyk of the Taras Shevchenko National University of Kyiv. Geology* 95, 16–24.
- Dernov V., 2022a. Nemors'ki peletsypody mospyns'koyi svity (verkhniy bashkyr) Donets'koho baseynu: systematychnyy sklad, paleoekolohiya ta stratyhrfachne znachennya [Nonmarine bivalves from the Mospyne Formation (upper Bashkirian) of the Donets Basin: taxonomy, paleoecology, and stratigraphic significance]. *Geologichnij zhurnal* 380, 34–56.
- Dernov V., 2022b. Late Bashkirian ammonoids from the Mospyne Formation of the Donets Basin, Ukraine. *Fossil Imprint* 78, 489–512.
- Dernov V.S., 2022c. The first record of Cyclida (Pancrustacea, Multicrustacea) in the Carboniferous of the Donets Basin, Ukraine. *Collection of scientific works of the Institute of Geological Sciences of NAS of Ukraine* 15, 78–85.
- Dernov V., 2023. *Hankoichnus* ichnogen. nov., a new arthropod (?) trace fossil from the Carboniferous of the Donets Basin (Ukraine). *Geologichnij zhurnal* 382, 53–58.
- Dernov V., 2024a. Shell injuries in *Densepustula* Lazarev, 1982, Pennsylvanian productidine brachiopod from the Donets Basin, Ukraine. *Carnets Geol.* 24, 143–162.
- Dernov V., 2024b. A low-diverse Visean (Mississippian) cephalopod assemblage from the Dnipro-Donets Depression (Ukraine). *Revista Brasileira de Paleontologia* 27, e20240433, 23 pp.
- Dernov V.S. & Poletaev V.I., 2024. New geological and palaeontological data of the Dyakove Group (Carboniferous) and age-related rock formations of the central Donets Basin, Ukraine. *Geologichnij zhurnal* 386, 3–21.
- Dernov V.S. & Udovychenko N.I., 2019a. Novi mist-seznakhodzhennya zalyshkiv fauny v rozrizi bashkyrs'koho yarusu (nyzhniy pensyl'vaniy) Donets'koho baseynu [New Bashkirian (Early Pennsylvanian) fossil sites in the Donets Basin]. *Collection of scientific works of the Institute of Geological Sciences of the NAS of Ukraine* 12, 40–47.
- Dernov V.S. & Udovychenko M.I., 2019b. K paleobotanicheskoy kharakteristike mospinskoy svity (sredniy karbon, Donbass) [On the palaeobotanical characteristic of the Mospino Formation]. *Visnyk of V.N. Karazin Kharkiv National University, Geology, Geography, Ecology* 51, 67–82.
- Dernov V.S. & Udovychenko N.I., 2021. Nakhodka drevneyshego konkhostraka (Crustacea: Branchiopoda) v karbone Donbassa [A record of the earliest conchostracan crustacean (Crustacea: Branchiopoda) in the Carboniferous of the Donets Basin]. *Natural Sciences: Projects, Research, Prospects. Proceedings of the 2nd International Scientific and Practical Conference*. Starobilsk, 31–33.
- Dewar W., 1939. *Anthraconauta* (*Anthracomya*) *minima* (*auctorum*) and its associates in the Lancashire Coalfield. *Bulletin of the Geological Survey of Great Britain* 1, 47–66.
- Dunaeva N.N., 1950. O Branchiopoda verkhnekamennougol'nykh otlozheniy Donetskogo basseyna [On Branchiopoda from the Upper Carboniferous strata of the Donets Basin]. Materials on the stratigraphy and palaeontology of the Donets Basin. Ugletekhizdat, Kharkiv and Moscow, 160–174.
- Dunaeva N.M., 1969. *Vidkrytyi Donbass* [Open Donets Basin]. [In:] Bondarchuk V.G. (Ed.): *Stratygraphiya URSR*. Tom 5. Karbon [Stratigraphy of the Ukrainian SSR. Volume 5. Carboniferous]. Naukova Dumka, Kyiv, 21–48.
- Etheridge R., 1879. On the occurrence of the genus *Dithyrocaris* in the Lower Carboniferous, or Calciferous Sandstone Series of Scotland, and that of a second species of *Anthrapalaemon* in these beds. *Quarterly Journal of the Geological Society* 35, 464–474.
- Feofilova A.P. & Levenstein M.L., 1963. *Osobennosti osadko- i uglenakopleniya v nizhnem i srednem karbone Donetskogo basseyna* [Features of sedimentation and coal accumulation in the Lower and middle Carboniferous of the Donets Basin]. Academy of Sciences of the USSR, Moscow, 180 pp.
- Fissunencko O.P., 2000. *K probleme moskovskogo yarusa* [On the problem of the Moscovian Stage]. Luhansk University Publishing House, Luhansk, 66 pp.
- Fohrer B., Nemyrovska T.I., Samankassou E. & Ueno K., 2007. The Pennsylvanian (Moscovian) Izvarino section, Donets Basin, Ukraine: a multidisciplinary study on microfacies, biostratigraphy (conodonts, foraminifers, and ostracodes), and paleoecology. *Journal of Paleontology* 81, 1–85.
- Geinitz H.B., 1855. *Die Versteinerungen der Steinkohlenformation in Sachsen* [The fossils of the coal formation in Saxony]. Englemer, Leipzig, 61 s.
- Geinitz H.B., 1861. *Dyas oder die Zechsteinformation und das Rothliegend.* 1. *Die animalischen ueberreste der Dyas* [Dyas or the Zechstein Formation and the Rothliegend. Part 1. The animal remains of the Dyas]. Wilhelm Engelmann, Leipzig, 130 s.
- Germar E.F., 1844–1853. *Die Versteinerungen des Steinkohlengebirges von Wettin und Lobejun im Salkkreise* [The fossils of the Coal Measures of Wettin and Lobejun in the Salkkreis]. Schwetschke und Sohn, Halle, 116 s.
- Girty G.H., 1915. Fauna of the Wewoka Formation of Oklahoma. *United States Geological Survey Bulletin* 544, 1–353.
- Goldenberg F., 1855–1862. *Flora Saraepontana fossilis. Die Pflanzenversteinerungen des Steinkohlengebirges von Saarbrücken. II. Die Sigillarien des Kohlengebirges, in analytischer, beschreibender und bildlicher Darstellung* [Flora Saraepontana fossilis. The plant fossils of the Saarbrücken Coal Mountains. II. The Sigillaria of the Coal Measures, in analytical, descriptive, and pictorial representation]. Saarbrücken, 60 pp.
- Gorak S.V., 1950. Pro tsypriidyny (*Cypridina*) z seredniogo karbone Donets'koho baseynu [On the cypridins (*Cypridina*) from the middle Carboniferous of the Donets Basin]. *Geologichnij zhurnal* 10, 56–59.

- Gorak S.V., 1956. Pro stratyhrafiyu nyziv turneys'koho yarusu i mezhu mizh devonom i karbonom v Donets'komu baseyni za faunoyu ostrakod [On the stratigraphy of the lower Tournaisian and the Devonian-Carboniferous boundary in the Donets basin based on ostracods]. *Geologichnij zhurnal* 16, 33–40.
- Gorak S.V., 1958a. Stratyhrafichne poshyrennya ostrakod vapnyakovoyi tovshchi nyzhn'oho karbonu Donets'koho baseynu [Stratigraphic distribution of ostracods in the Lower Carboniferous limestone succession of the Donets Basin]. *Geologichnij zhurnal* 18, 35–43.
- Gorak S.V., 1958b. Ostrakody deyakykh horizontiv seredn'oho i verkhn'oho karbonu Donets'koho baseynu ta umovy yikh isnuvannya [Ostracods of some middle and Upper Carboniferous stratigraphic levels of the Donets Basin, and their living conditions]. *Transactions of the Institute of Geological sciences. Palaeontology and Stratigraphy* 28, 1–91.
- Gorak S.V., 1964. Verkhnevizeyskiye i nizhnenamyurskiye ostrakody nekotorykh rayonov severo-zapadnogo sektora Bol'shogo Donbassa [Upper Visean and lower Namurian ostracods of some regions of the north-western part of the Great Donets Basin]. *Transactions of the Institute of Geological Sciences. Palaeontology and Stratigraphy* 48, 154–204.
- Gorak S.V., 1971. *Ostracoda*. [In:] Aisenverg D.Ye. (Ed.): Atlas turneiskoy fauny Donetskogo basseyna [Atlas of the Tournaisian fauna of the Donets Basin]. Naukova Dumka, Kyiv, 100–115.
- Gorak S.V., 1977. *Kamennougol'nyye ootrakody Bol'shogo Donbassa (paleoekologiya, paleozoogeografiya, biostratigrafiya)* [Carboniferous ostracods of the Great Donets Basin (palaeoecology, palaeozoogeography, biostratigraphy)]. Naukova Dumka, Kyiv, 148 pp.
- Gothan W., 1941. Paläobotanische Mitteilungen. 5. Die Unterteilung der karbonischen Neuropteriden. *Paläontologische Zeitschrift* 22, 421–428.
- Gravenhorst J.L.C., 1843. Vergleichende Zoologie. Graß, Barth & Comp., Breslau, 687 pp.
- Hall J. & Clarke J.M., 1888. Trilobites and other Crustacea of the Oriskany, Upper Helderberg, Hamilton, Portage, Chemung and Catskill groups. *New York State Geological Survey, Natural History of New York, Palaeontology* 7, 236 pp.
- Hind W., 1894–1896. A monograph on *Carbonicola*, *Anthracomya*, and *Naiadites*. Palaeontographical Society, London, 182 pp.
- Hirmer M., 1927. Handbuch der Paläobotanik. I. Thalophyta-Bryophyta-Pteridophyta. R. Oldenbourg, München & Berlin, 708 pp.
- Jones T.R. & Woodward H., 1887–1899. The British Palaeozoic Phyllopora (Phyllocarida, Packard). *Monograph of the Palaeontographical Society* 41, 46, 52–53, 1–211.
- Kammer T.W., Brett C.E., Boardman D.R. & Mapes R.H., 1985. Ecologic stability of the dysaerobic biofacies during the Late Paleozoic. *Lethaia* 19, 109–121.
- Krestovnikov V.N., 1961. Novyye rakoobraznye fillokaridy Paleozoya Russkoi platformy, Urala, Timana i Donbassa [New phyllocarid crustaceans from the Palaeozoic of the Russian plate, the Urals, Timan, and Donets Basin]. *Trudy Geologicheskogo Instituta* 52, 1–67.
- Latreille P.A., 1806. Histoire naturelle, générale et particulière, des Crustacés et des Insectes. *Histoire naturelle* 80, Paris, 408 pp.
- Lindley J. & Hutton W., 1831–1833. *The fossil flora of Great Britain, or figures and descriptions of the vegetable remains found in a fossil state in this country*. Vol. 1, Ridgway, London, 218 pp.
- Lindley J. & Hutton W., 1833–1835. *The fossil flora of Great Britain, or figures and descriptions of the vegetable remains found in a fossil state in this country*. Vol. 2, Ridgway, London, 208 pp.
- Liu Y., Poschmann M.J., Fan R., Zong R. & Gong Y., 2023. Silurian phyllocarid crustaceans (Phyllocarida, Archaeostraca) from South China. *Journal of Systematic Palaeontology* 21, 2187718.
- Logvinenko N.V., 1953. *Litologiya i paleogeografiya produktivnoy tolshchi donetskogo karbona* [Lithology and palaeogeography of the Carboniferous coal-bearing deposits of the Donets Basin]. Kharkiv University, Kharkiv, 436 pp.
- M'Coy F., 1844. A synopsis of the characters of the Carboniferous limestone fossils of Ireland. Williams & Norgate, Dublin, 274 pp.
- M'Coy F., 1849. On some new genera and species of Palaeozoic corals and Foraminifera. *The Annals and Magazine of Natural History* 2, 1–20, 119–136.
- Malinky J.M. & Heckel P.H., 1998. Paleocology and taphonomy of faunal assemblages in gray "core" (off-shore) shales in Midcontinent Pennsylvanian cyclothems. *Palaaios* 13, 311–334.
- Meek F.B. & Worthen A.H., 1870. Descriptions of new species and genera of fossils from the Paleozoic rocks of the western states. *Proceedings of the Academy of Natural Sciences of Philadelphia* 22, 22–56.
- Mychko E.V. & Dernov V.S., 2019. Novyye nakhodki trilobitov v srednem karbone Donetskogo basseyna [New record of trilobites in the middle Carboniferous of the Donets Basin]. *Bulletin of the Moscow Society of Naturalists (Geological Section)* 94, 52–63.
- Nemyrovskaya T.I., 1999. Bashkirian conodonts of the Donets Basin, Ukraine. *Scripta Geologica* 119, 1–116.
- Nemyrovskaya T.I. & Yefimenko V.I., 2013. *Seredniy karbon (nyzniy pensyl'vaniy)* [Middle Carboniferous (Lower Pennsylvanian)]. [In:] Gozhyk P.F. (Ed.): Stratyhrafiya verkhn'oho proterozoyu ta fanerozoyu Ukrainy. 1. Stratyhrafiya verkhn'oho proterozoyu, paleozoyu ta mezozoyu Ukrainy [Stratigraphy of the Upper Proterozoic and Phanerozoic of Ukraine. 1. Stratigraphy of the Upper Proterozoic, Palaeozoic and Mesozoic] LAT & K, Kyiv, 283–303.
- Novik E.O., 1952. *Kamennougol'naya flora Yevropeyskoy chasti SSSR* [Carboniferous flora of the European part of the USSR]. Academy of Sciences of the USSR, Moscow, 468 pp.
- Novik E.O., 1974. *Zakonomernosti razvitiya kamennougol'noy flory yuga Yevropeyskoy chasti SSSR* [Development of the Carboniferous flora of the south part of the European part of the USSR]. Naukova Dumka, Kyiv, 139 pp.

- Nyhuis C.J., Amler M.R.W. & Herbig H.-G., 2015. Facies and palaeoecology of the late Visean Actinopteria black shale event in the Rhenish Mountains (Germany, Mississippian). *Zeitschrift der Deutschen Gesellschaft für Geowissenschaften* 166, 55–69.
- Packard A.S. Jr., 1879. The nebalid Crustacea as types of a new order. *Annals and Magazine of Natural History, Series 5* 3, 459.
- Poletaev V.I. & Vdovenko M.V., 2013. *Nyzhniy karbon (Missisipi)* [Lower Carboniferous (Mississippian)]. [In:] Gozhik P.F. (Ed.): *Stratygraphiya verkhnyogo proterozoyu i fanerozoyu Ukrainy*. 1. *Stratygraphiya verkhnyogo proterozoyu, paleozoyu i mezozoyu [Stratigraphy of the Upper Proterozoic and Phanerozoic of Ukraine. Volume 1. Stratigraphy of the Upper Proterozoic, Palaeozoic and Mesozoic]*. LAT&K, Kyiv, 250–283.
- Poletaev V.I., Makarov I.A., Nemirovskaya T.I. & Maslo A.I., 1988. *Putevoditel' ekskursii po razrezam pogranychnykh otlozheniy nizhnego i srednego karbona Donbassa* [Guide to the Lower/Middle Carboniferous boundary interval sections of the Donets Basin]. Institute of Geological Sciences of the Academy of Sciences of the Ukrainian SSR, Kyiv, 62 pp.
- Poletaev V.I., Vdovenko M.V., Shchokolev O.K., Boyarina N.I. & Makarov I.A., 2011. *Stratotypy rehional'nykh stratyhrafichnykh pidrozdiliv karbonu i nyzhn'oyi permi Dono-Dniprovs'koho prohynu* [Stratotypes of the Carboniferous and Lower Permian regional stratigraphic units of the Don-Dniipro Downwarp]. Logos, Kyiv, 234 pp.
- Popov A.V., 1979. *Kamennougol'nyye ammonoidei Donbassa i ikh stratigraficheskoye znacheniye* [Carboniferous ammonoids of the Donets Basin and their stratigraphic significance]. Nedra, Leningrad, 119 pp.
- Portlock J.E., 1843. *Report on the geology of the county of Londonderry, and of parts of Tyrone and Fermanagh*. Longman, Brown, Green and Longmans, London. 1–784.
- Posudiyevsky A.B., 1977. K izucheniyu fatsial'nogo sostava porod neposredstvennoy krovli ugol'nykh plastov v Donbasse [On the study of depositional environments of the roof shales of the coal beds in the Donets Basin]. *Lithology and Mineral Resources* 3, 156–159.
- Prykhod'ko A.V., 1948. Ostracoda izvestnyakovoy tolshchi nizhnekamennougol'nykh otlozheniy Donetskogo basseyna [Ostracoda from the Lower Carboniferous limestone succession of the Donets Basin]. *Scientific notes of the Dnipropetrovs'k University* 35, 57–68.
- Quinn J.H., 1977. Sedimentary process in *Rayonoceras* burial. *Fieldiana Geology* 33, 511–520.
- Reznikov A.I., 1993. D'yakovskaya seriya i yeye polozheniye v stratigraficheskoy skheme Donbassa [The Dyakove Group and its stratigraphic position in the Carboniferous succession of the Donets Basin]. *Geologichnij zhurnal* 262, 52–57.
- Riabini A.N., 1921. Zametki o nekotorykh iskopaemykh Phyllocarida [Notes on some fossil Phyllocarida]. *Yearbook of the All-Union Palaeontological Society* 3, 23–33.
- Rode A.L. & Lieberman B.S., 2002. Phylogenetic and biogeographic analysis of Devonian phyllocarid crustaceans. *Journal of Paleontology* 76, 271–286.
- Rolfe W.D.I., 1969. *Phyllocarida*. [In:] Moore R.C. (Ed.): *Treatise on Invertebrate Paleontology Part R, Arthropoda* 4(1). Geological Society of America and University of Kansas Press, Lawrence, 296–331.
- Schram F.R., 1980. *Pygocephalus* from the Upper Carboniferous of the Soviet Union. *Journal of Paleontology* 54, 50–56.
- Schram F.R. & Horner J., 1978. Crustacea of the Mississippian Bear Gulch Limestone of central Montana. *Journal of Paleontology* 52, 394–406.
- Schram F.R., Rolfe W.D.I. & Hay A.A., 1997. *Crustacea*. [In:] Shabica C.W. & Hay A.A. (Eds): *Richardson's guide to the fossil fauna of Mazon Creek*. Northeastern Illinois University Press, Chicago, 155–171.
- Schram J.M., 1980. *Dithyrocaris* sp. (Phyllocarida) from the Allegheny Group of Ohio. *Transactions of the San Diego Society of Natural History* 19, 213–216.
- Schraut G., 1999. Paläofaunistische Untersuchungen aus dem Unter-Karbon von Nötsch (Kärnten, Österreich). Teil 2: Cephalopoda (Nautiloidea, Ammonoidea), Crustacea (Phyllocarida), Echinoidea. *Jahrbuch der Geologischen Bundesanstalt* 141, 503–517.
- Scouler J., 1835. Account of some fossil Crustacea which occur in the Coal Formation. *Records of General Science* 1, 136–141.
- Sternberg K. von., 1820–1838. Versuch einer geognostisch-botanischer Darstellung der Flora der Vorwelt II, 7/8 [Attempt at a geognostic-botanical representation of the flora of prehistoric times II, 7/8]. Gotlieb Hässe Söhne, Prague, 81–220.
- Tchernyshev B., 1935. Cirripedia aus den Donez- und Kuznezbecken. *Yearbook of the All-Russian Paleontological Society* 10, 31–38.
- Thompson J.B. & Newton C.R., 1987. Ecological reinterpretation of the dysaerobic Leiorhynchus fauna: Upper Devonian Genesee black shale, central New York. *Palaios* 2, 274–281.
- Ustinovskiy Yu.B., 1993. *Kayal'skiy etap (pozdnii bashkir)* [Kayalian stage (Late Bashkirian)]. [In:] Tsegelnyuk P.D. (Ed.): *Geologicheskaya istoriya territorii Ukrainy* [Geological history of Ukraine]. Naukova Dumka, Kyiv, 141–144.
- Van Straelen V., 1933. Note sur les phyllocarides paléozoïques ou Archaeostraca de la Belgique et remarques sur la systématique de ces crustacés. *Bulletin du Musée Royal d'Histoire Naturelle de Belgique* 9, 1–12.
- Weber V.N., 1933. Trilobity Donetskogo basseyna [Trilobites of the Donets Basin]. *Transactions of the All-Union Geological Exploration Department of NKTP of the USSR* 225, 1–95.
- Wignall P.B., 1994. *Black shales*. Clarendon Press, Oxford, 127 pp.
- Woodward H., 1865. On some crustacean teeth from the Carboniferous and upper Ludlow rocks of Scotland. *Geological Magazine* 2, 401–404.
- Woodward H., 1871. On some new phyllopodous crustaceans from the Palaeozoic rocks. *Geological Magazine* 8, 104–107.
- Woodward H. & Etheridge R., 1873. Explanation of sheet 23. *Memoirs of the Geologic Survey, Scotland*, 1–99.

- Woodward H. & Etheridge R. Jr., 1874. On some specimens of *Dithyrocaris* from the Carboniferous Limestone Series, East Kilbride, and from the Old Bed Sandstone of Lanarkshire. *Geological Magazine* 1, 107–111.
- Yefimov I.N., 1934. Raspredeleniye organicheskikh ostatkov v krovle plastov kamennykh ugley Donetskogo basseyna [Distribution of fossils in the roof shales of the coal beds in the Donets Basin]. *Reports of the Academy of Sciences of the USSR* 6, 123–125.
- Zalessky M.D., 1907a. Materialy po kamennougol'noy flore Donetskogo basseyna. I. Rastitel'nyye ostatki kolleksii V. Domgera [Materials on the Carboniferous flora of the Donets Basin. I. Plant remains of V. Domher's collection]. *Proceedings of the Geological Committee* 26, 351–422.
- Zangerl R. & Richardson E.S. Jr., 1963. The paleoecological history of two Pennsylvanian black shales. *Fieldiana Geology* 4, 1–352.
- Zeiller R., 1879. Vegetaux fossiles du terrain Houiller de la France. *Explication de la carte géologique de la France* 4, 1–185.
- Zeiller R., 1888. Vegetaux fossiles du bassin houiller de Valenciennes. *Etude des gites minereaux de la France*, 731 pp.
- Zittel K.A., 1900. *Text-book of palaeontology*. Macmillan, London & New York, 706 pp.

Manuscript submitted: 15 November 2024

Revision accepted: 26 March 2025