

TEMPORAL VARIATION IN VEGETATION INDEXES FOR PINE AND BEECH STANDS DURING THE VEGETATION SEASON, SZCZECIN LOWLAND, POLAND

PAWEŁ PIEKARSKI, ZBIGNIEW ZWOLIŃSKI

Institute of Geocology and Geoinformation, Adam Mickiewicz University in Poznań, Poland

Manuscript received: May 30, 2014

Revised version: August 5, 2014

PIEKARSKI P., ZWOLIŃSKI Z., 2014. Temporal variation in vegetation indexes for pine and beech stands during the vegetation season, Szczecin Lowland, Poland. *Quaestiones Geographicae* 33(3), Bogucki Wydawnictwo Naukowe, Poznań, pp. 131-143, 2 tables, 7 figs. DOI 10.2478/quageo-2014-0037, ISSN 0137-477X.

ABSTRACT: Located in north-western Poland, the Bukowska Forest and Goleniowska Forest are vast woodlands consisting of areas with a homogeneous species composition that have been scarcely affected by humans. In this respect, they provided an excellent subject for scientific research, the purpose of which was to determine quantitative differences in selected vegetation indices of pine and beech stands in various periods during their vegetation seasons. Another purpose was to characterize the variation in these indices for each stand in its vegetation season. Four Landsat 5 TM images taken in 2007 and 2010 at four different points of vegetation season provided the basis for the analysis. In the analysis, 19 wooded areas with a homogeneous species composition were tested. In Bukowska Forest, the tested area was a beech stand, and in Goleniowska Forest, it was a pine stand. Acquired data was used to calculate the following vegetation indices: Normalized Difference Vegetation Index (NDVI), Transformed Vegetation Index (TVI), Green Normalized Difference Vegetation Index (Green NDVI), Normalized Difference Greenness Index (NDGI) and Normalized Difference Index (NDI). Subsequent research allowed to establish that the beech and pine stands differed significantly with respect to their calculated vegetation indices. These differences derived both from the biochemical and structural attributes of leaves and needles, as well as from transformations that occur in the stands during vegetation seasons. Analysis of the indices' allowed us to determine these differences and the influence of the stands' phenological phases on the indices.

KEY WORDS: spectral reflectance, pine forest, beech forest, vegetation indices, Landsat

Address of the corresponding author: Zbigniew Zwoliński, Institute of Geocology and Geoinformation, Adam Mickiewicz University in Poznań, Dziegielowa 27, 61-680 Poznań, Poland; e-mail: zbzwo@amu.edu.pl

Introduction

Advances in satellite remote sensing technology allow for ever more precise measurements. Each subsequent sensor sent into orbit is superior to previous ones in terms of their spatial, radiometric and spectral resolution. Initially, the spatial resolution only allowed for determining variations in the size of woodland areas (Haapanen et al. 2004, Virk, King 2006), estimating their

biomass (Zheng 2004) and locating deadwood areas (Zajączkowski, Węzyk 2000). Ikonos and QuickBird satellites offered data with a resolution of less than one meter. High-resolution images from these satellites provided the basis for numerous studies of woodland areas, including precise classifications of them (de Kok et al. 2005, Mallinis et al. 2008, Kim et al. 2009). Another milestone was the introduction of hyperspectral sensors. Their spectral resolution

was further improved to a degree that permitted researchers to establish both the structural and biochemical attributes of trees. Hyperspectral data can reveal correlations between spectral reflectance and the amount of water contained in leaves (Colombo et al. 2008), their starch and lignin content (O'Neill et al. 2002), and natural dyes such as chlorophyll (Daughtry et al. 2000; Gitelson et al. 2003; Wężyk et al. 2003; Castro, Sanchez-Azofeifa 2008), carotenoids (Wężyk et al. 2003) and anthocyanins (Sims, Gamon 2002). The data also allow to estimate nitrogen content and to determine woodland productivity (Smith et al. 2002). Advances in remote sensing technology have translated into research that is more precise, and allow researchers to obtain information in a faster and more comprehensive manner. Thus, remote sensing, whether based on satellite, aerial, or terrestrial measurements, facilitates environmental research and could possibly lead to the discovery of new theories or correlations (Zwoliński 2012).

This article presents the results of a comparative analysis of the vegetation indices of pine stands in Goleniowska Forest, and of beech stands in Bukowska Forest (in north-western Poland), conducted on the basis of satellite images from Landsat 5 TM. Beeches and pines were intentionally chosen for this analysis (Piekarski, Zwoliński 2012) because they play a significant role in the forestation of Poland (Przybylski 1970, Białobok 1990). The purpose of the paper is to establish differences in the vegetation indices in pine and beech stands, as well as to attempt to explain the character of variations in the vegetation indices of each stand during its vegetation season.

Research area

Bukowska Forest and Goleniowska Forest are located in north-western Poland, in the Szczecin Lowlands (Fig. 1). The *Bukowska and Goleniowska Forests* Promotional Forest Complex is dominated by pine and beech stands, with occasional oak stands, and, in areas featuring watercourses, alder and riparian stands, as well (Borówka 2004, Mirek et al. 2005, Rąkowski et al. 2005).

Environmental characteristics and forest surveys served as basis for selecting nineteen test ar-

reas from satellite images (Fig. 2). All were woodland areas; nine were in Goleniowska Forest of areas ranging from 2.8 to 27.2 ha, 116.5 ha in total), nine - in Bukowska Forest (areas ranging from 3.6 to 22.1 ha, 95.2 ha in total). The major selection criterion was the homogeneity of the species composition of a stand. For Goleniowska Forest, these were pine stands, and for Bukowska Forest, beech stands. In both areas, the stands varied with regards to age (cf. Table 1). In Goleniowska Forest, the ages of the pines ranged from 39 to 74 years, with nine areas that were homogeneous with respect to age. The trees in the Bukowska Forest dated back between 30 to over 150 years, with seven homogeneous and two moderately heterogeneous areas.

Data

Images used for analysis came from a Thematic Mapper sensor located onboard the Landsat 5 satellite. Only images completely free of overcast were considered for use. Ultimately, four spectral images were selected, taken during the vegetation season on the following days: 29 April 2007, 10 July 2010, 12 September 2010, 30 October 2010, each falling in distinct thermal seasons according to the Lorenc system (2005): once each in spring and winter, and twice in summer. The images included seven spectral bands, six of which were used in the analysis: 1 - blue (0.45-0.52 μm), 2 - green (0.52-0.60 μm), 3 - red (0.63-0.69 μm), 4 - near-infrared (0.76-0.90 μm), 5 - short-wavelength infrared (1.55-1.75 μm), and 7 - short-wavelength infrared (2.08-2.35 μm). Channel no. 6 was excluded due to its low spatial resolution relative to other channels.

Survey data for the analysis were obtained from, respectively: the Kliniska Forest Inspectorate in the case of Goleniowska Forest, and the Gryfino Forest Inspectorate in the case of Bukowska Forest. Maps of forest sub-units were scanned and superimposed onto geographic coordinates based on reference points derived from cadastral data available from www.geoportal.gov.pl. The Universal Transverse Mercator coordinate system was used to georeference the selected satellite images. After being georeferenced, forest sub-units were vectorized, and test areas were

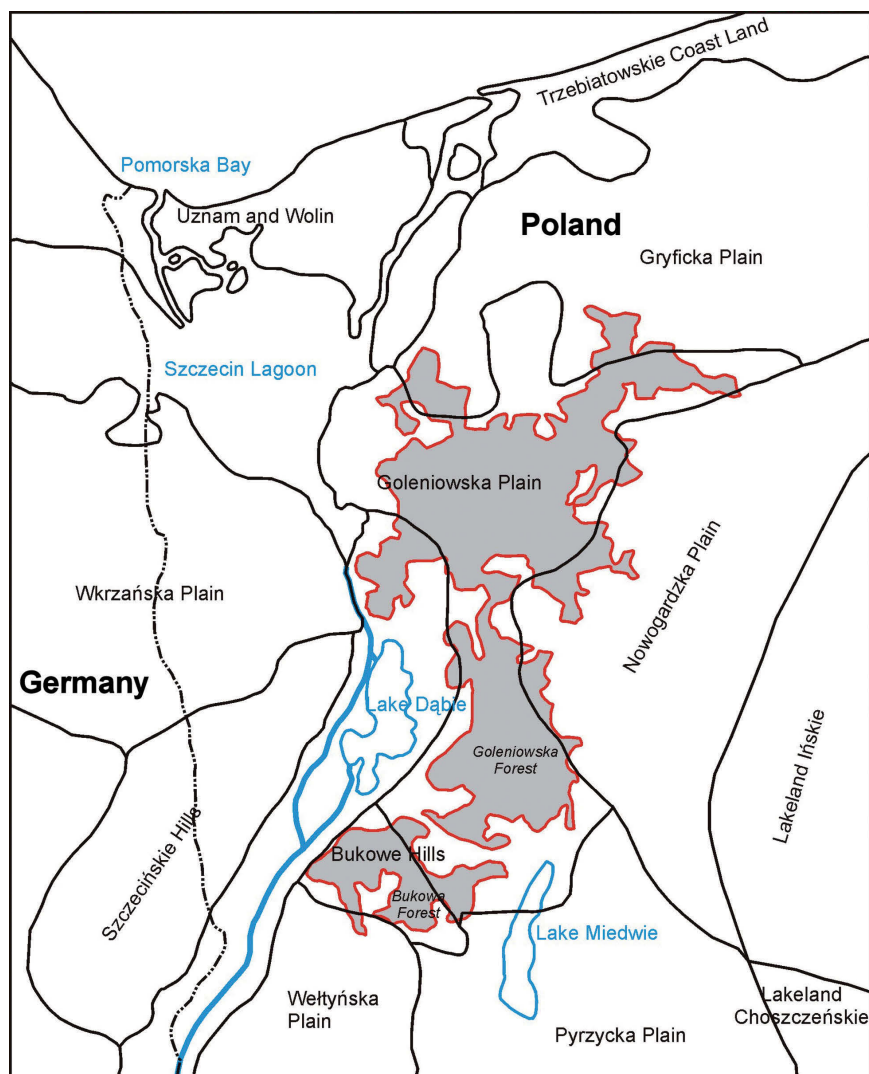


Fig. 1. The location of Goleniowska Forest and Bukowska Forest superimposed against a regional division of Poland (Kondracki 2009, altered)

divided into polygons based on the species composition of the stands.

Research methods

Before analysis, radiometric and topographic correction was conducted. Radiometric correction was performed using a script for TNTmips software created by Paris (2005), which converts digital numbers to the Standardized Reflectance Factor Index (SRFI). Using information contained in the metadata on the sun's angle of incidence and the date the image was taken, the script calculates the reflectance factor for the upper layers of the atmosphere. The script also reduces the influence of atmosphere on the spectral reflectance values.

Topographic correction was conducted using Paris' script (2005), which corrects standardized reflectance factor index for shaded areas. For this purpose, a digital elevation model, obtained from the NASA website (2008), prepared on the basis of Shuttle Radar Topography Mission was used. The procedure of correction allowed obtaining homogeneously lit satellite views.

Another stage of work was generating the spectral characteristics of the stands. Vector layers were superimposed onto each satellite image in the form of polygons demarcating the test areas. For each area, the average value for the reflectance index was calculated for each of the six analyzed spectral bands. The calculation was based on all the cells of the raster image, whose centres were located within the vector layer (cen-

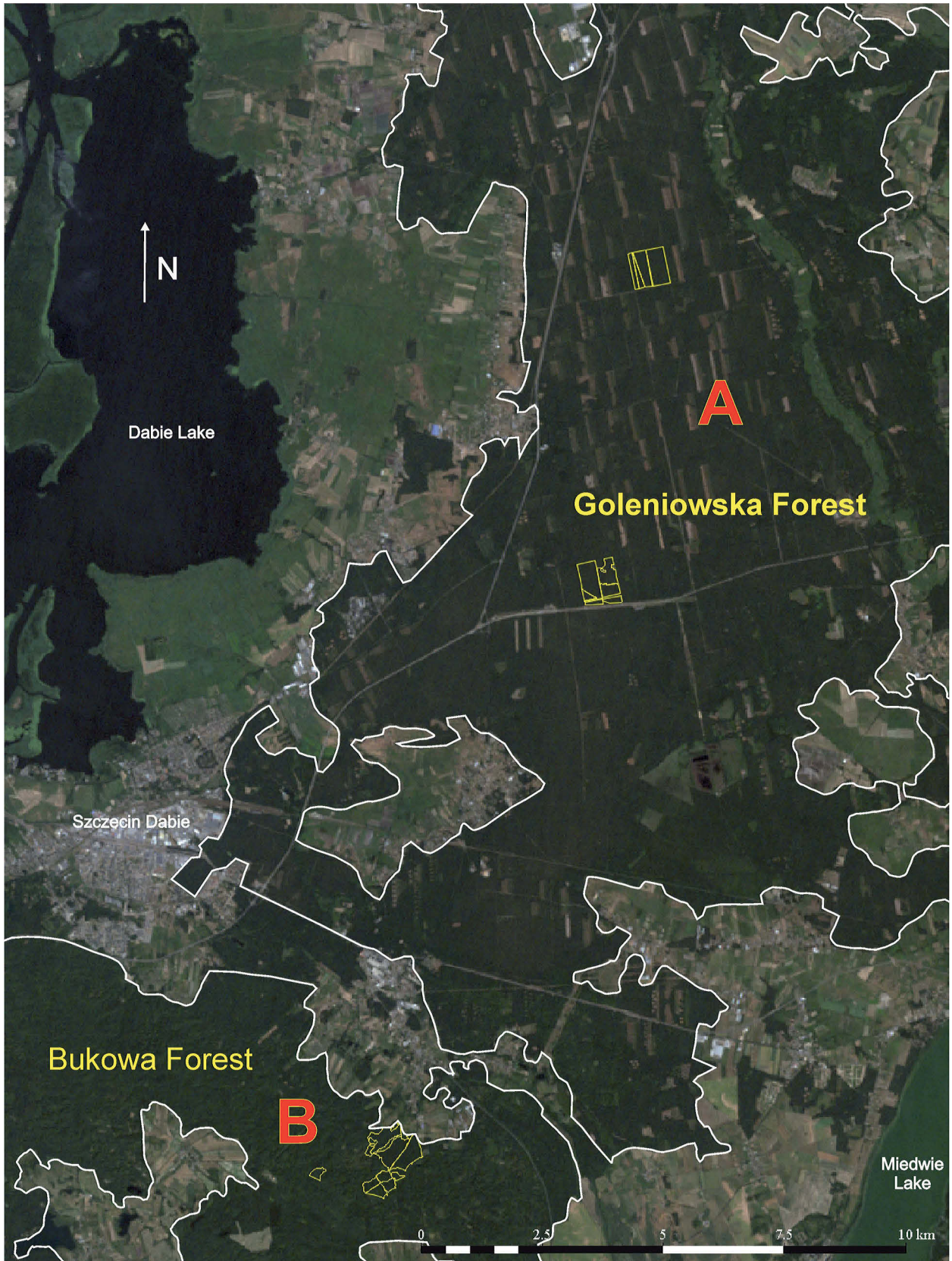


Fig. 2. Satellite image representing the Szczecin Lowland together with test area A (Goleniowska Forest with pine stands) and B (Bukowska Forest with beech stands)

Table 1. Values for spectral reflectance [SRFI] of visible radiation (channels 1, 2 and 3) for beech and pine stands at various points of the vegetation season

Test area	Age of trees (percentage of the entire stand)	Spectral channels											
		1	2	3	1	2	3	1	2	3	1	2	3
		29.04.2007			10.07.2010			12.09.2010			30.10.2010		
Goleniowska Forest													
pine1	52 years - 80%; 69 years - 20%	243	321	272	175	263	214	183	282	179	379	458	355
pine2	74 years - 100%	255	324	271	191	266	219	206	285	195	375	472	355
pine3	74 years - 100%	237	313	271	194	278	227	195	288	203	366	412	331
pine4	54 years - 100%	240	319	271	186	274	232	182	282	190	394	456	361
pine5	74 years - 100%	238	314	269	177	271	223	182	289	184	381	461	361
pine6	74 years - 100%	242	309	268	171	273	228	185	293	200	385	418	348
pine7	69 years - 100%	227	315	262	174	268	203	163	270	168	375	452	353
pine8	43 years - 100%	228	307	249	177	258	192	162	266	164	415	445	337
pine9	39 years - 100%	240	307	242	183	264	205	175	283	174	396	450	352
pine10	69 years - 100%	229	315	251	172	268	200	164	271	165	371	437	342
Min	-	227	307	242	171	258	192	162	266	164	366	412	331
Mean	-	238	314	263	180	268	214	180	281	182	384	446	349
Max	-	255	324	272	194	278	232	206	293	203	415	472	361
SD	-	8.4	5.9	11.1	8.1	5.8	13.5	14.2	9	14.4	14.6	18.8	9.9
Bukowska Forest													
beech1	67 years - 100%	272	610	342	145	243	150	195	311	194	304	474	827
beech2	67 years - 100%	267	606	322	142	235	154	186	304	187	300	451	765
beech3	62 years - 100%	279	614	348	157	263	161	201	318	199	308	477	829
beech4	40 years - 60%; 30 years - 30%; 60 years - 10%	280	616	348	167	259	158	191	309	190	297	453	766
beech5	150 years - 100%	261	622	335	147	254	149	180	321	202	298	440	737
beech6	152 years - 100%	264	610	336	134	263	156	188	324	207	309	457	671
beech7	112 years - 100%	262	588	325	131	269	155	195	332	200	266	383	624
beech8	132 years - 100%	255	630	324	137	241	147	188	324	197	263	388	602
beech9	40 years - 80%; 55 years - 20%	258	610	330	165	269	167	203	320	206	292	526	803
Min	-	255	558	332	131	235	147	180	304	187	263	383	602
Mean	-	266	612	334	147	255	155	192	318	198	293	450	763
Max	-	280	630	348	167	269	167	203	332	207	309	526	829
SD	-	8.8	11.6	10	13.2	12.6	6.3	7.4	8.7	6.7	17	44	85

tral point algorithm). In this way, each test area was assigned average values for the standardized reflectance factor index for each of the six spectral channels and four periods in the vegetation season.

Then, the vegetation indices for each of the four periods in the vegetation season were calculated for each test area. The following five vegetation indices were selected for comparison: the Normalized Difference Vegetation Index - NDVI (Rouse et al. 1973), Transformed Vegetation Index - TVI (Rouse et al. 1973), Green Normalized Difference Vegetation Index - Green NDVI (Gitelson et al. 1996), Normalized Difference Green-

ness Index - NDGI (Chamard et al. 1991 after Bannari et al. 1995) and the Normalized Difference Index - NDI (McNairn, Protz 1993 after Bannari et al. 1995).

Results and interpretation

Spectral reflectance was analysed for all the satellite images, and the results were compiled in two synthetic Sandarized Reflectance Factor Index (SFRI) tables, one for the visible spectrum (Table 1), and a second for the infrared spectrum (Table 2). These were used to calculate five veg-

etation indices and to create graphs illustrating change over time in the indices for beech and pine stands in the months of the vegetation season studied.

Visible spectrum

Analysis of the SRFI table illustrating the visible spectrum (Table 1) reveals that the greatest differences in reflectance for the analyzed tree species occurred between 29.04.2007 and 30.10.2010. In April, the greatest difference occurred for the green radiation spectrum (channel 2). The average for the reflectance index for pine

stands was 298 SFRI units lower than for beech, meaning it was less by almost half. This is explained by differences in the chlorophyll content in pine needles and beech leaves. Because beech trees grow new leaves at the turn of April and May, chlorophyll content in beech leaves during this period is at its lowest for the entire vegetation season (Vanseveren 1973 after Oleksyn 1990). This results in higher reflectance because chlorophyll concentration is inversely proportional to reflectance in the green channel (Daughtry et al. 2000).

Reflectance values in the green channel in pine stands are higher in spring than in summer due

Table 2. Values for spectral reflectance [SRFI] of infrared radiation (channels 4, 5 and 7) for beech and pine stands at various points of the vegetation season

Test area	Age of trees (percentage of the entire stand)	Spectral channels											
		4	5	7	4	5	7	4	5	7	4	5	7
		29.04.2007			10.07.2010			12.09.2010			30.10.2010		
Goleniowska Forest													
pine1	52 years – 80%; 69 years – 20%	1692	1076	542	1885	844	375	2046	820	347	2838	1180	483
pine2	74 years – 100%	1652	1096	557	1862	872	398	2016	854	360	2746	1206	462
pine3	74 years – 100%	1634	1088	560	1834	891	416	1960	864	381	2610	1203	509
pine4	54 years – 100%	1688	1053	538	1892	876	399	2054	846	358	2865	1199	473
pine5	74 years – 100%	1673	1063	536	1856	866	388	1981	843	362	2718	1202	487
pine6	74 years – 100%	1667	1078	556	1870	880	409	1995	876	378	2667	1220	518
pine7	69 years – 100%	1777	1053	519	1978	848	363	2120	837	351	2872	1215	507
pine8	43 years – 100%	1829	972	470	2012	783	333	2203	780	315	3023	1157	487
pine9	39 years – 100%	1824	984	481	1968	834	386	2166	827	355	2983	1201	491
pine10	69 years – 100%	1796	1030	497	1973	849	370	2087	819	339	2826	1180	483
Min	–	1634	972	470	1834	783	333	1960	7800	315	2610	1157	462
Mean	–	1723	1049	526	1913	854	384	2063	837	355	2815	1197	490
Max	–	1829	1096	560	2012	891	416	2203	876	381	3023	1220	518
SD	–	74.8	42	32.4	63	30.8	24.6	80.6	27	19	131.5	18	17
Bukowska Forest													
beech1	67 years – 100%	3668	1601	702	3789	1534	586	3619	1633	613	3066	2572	1126
beech2	67 years – 100%	1782	1578	675	3646	1508	586	3470	1582	606	2928	2408	1062
beech3	62 years – 100%	1708	1619	709	4104	1619	619	3833	1690	639	3160	2485	1079
beech4	40 years – 60%; 30 years – 30%; 60 years – 10%	1796	1679	747	3968	1608	624	3671	1660	627	2971	2489	1104
beech5	150 years – 100%	3344	1545	695	3587	1531	597	3386	1620	625	2741	2544	1169
beech6	152 years – 100%	3408	1558	682	3447	1519	597	3218	1569	610	1489	2436	1140
beech7	112 years – 100%	3258	1480	667	3500	1526	603	3194	1555	613	2230	2146	1018
beech8	132 years – 100%	3548	1509	651	3563	1536	597	3253	1587	605	2338	2159	999
beech9	40 years – 80%; 55 years – 20%	4180	1718	737	4221	1667	644	3901	1712	654	3473	2762	1198
Min	–	3258	1480	651	3447	1508	586	3194	1555	605	2230	2146	999
Mean	–	3633	1588	696	3758	1561	606	3505	1623	621	2822	2445	1099
Max	–	4180	1718	747	4221	1667	644	3901	1712	654	3473	2762	1198
SD	–	282.1	76.6	31.6	278.9	55.9	19.4	265.2	55.2	16.6	408.3	194.4	66.4

to the growth of new needles. Although pine needles remain on a tree for a period of about three years (Przybylski 1970), some new needles grow every spring. This affects the reflectance in the green channel (channel two) because new needles have less chlorophyll than old ones. (Wężyk et al. 2003).

On 30.10.2010, a spike in visible spectrum radiation was recorded in the red channel (channel three) for beech trees. Spectral reflectance for beech was at that time 386 SFRI units higher, or almost twice the level recorded for pine. This relation in reflectance between the analyzed stands is explained by changes occurring inside beech leaves. As leaves grow old, the chlorophyll content in them decreases (Domański 2002), leading the reflectance in both the green and red channels (channels 2 and 3, respectively) to rise. In the process of aging, chlorophyll in leaves degrades more quickly than other organic pigments, such as carotenoids, which reflect light in the green and red spectra (Sanger 1971 after Kumar et al. 2002). This causes beech leaves to acquire a yellow and orange colouring. A decrease in chlorophyll content is also visible in the reflectance indices in the green channel for pine stands, which might be due to the aging of some needles. It was also noted that the maximum reflectance index in this spectrum corresponded with research by Linder (1972), in which the lowest chlorophyll content was recorded in October.

Infrared spectrum

Analysis of the reflectance indices for the near- and mid-wavelength infrared spectra (Table 2) reveals significant differences between the indices for pine and beech stands. In the case of near infrared (channel 4), these differences are most visible on the first three dates in the vegetation season. On those dates, the indices were 1,732 SRFI units higher in beech stands. This is because beech leaves and pine needles have different internal structures. Beech leaves are composed of a tissue called spongy mesophyll, which contains a large amount of air-filled space (Kumar et al. 2002). The tissue is a poor conductor of infrared light, which directly translates into higher reflectance indices in this spectrum (Ciołkosz et al. 1999). On the other hand, the tissue of pine nee-

dles contains less air (Kumar et al. 2002), which results in lower reflectance indices in the infrared spectrum.

In the autumn date (30.10.2010), the situation was quite different. The reflectance values for near infrared (channel 4) in the beech stand were decidedly lower than on earlier dates in the vegetation period. This was caused by the aging of leaves, which during this process losing both dry matter and macroelements such as nitrogen, phosphorus and potassium (Domański 2002). These losses change the leaves' internal structure, and as a consequence, decreased the reflectance indices for near infrared (Kumar et al. 2002). The drop was so serious (over 680 SFRI units) that reflectance indices in channel 4 for both pine and beech became similar to each other – the average for the indices in this spectrum were 2,822 units SRFI for beech and 2,815 for pine.

Throughout the entire vegetation season, major differences between the two tree species occurred in the reflectance in the short-wavelength infrared channels (channels 5 and 7). Both channels showed higher values for the beech stand. These differences were related to water saturation of the leaves and needles (Weng 2011). The higher the saturation, the lower value of the reflectance index for long-wave radiation (Kumar et al. 2002). The lower level of saturation in beech leaves may have resulted from intensive vaporization. Research by Hueber (1953 after Kieliszewska-Rokicka 1993) confirms that transpiration in beech leaves is almost three times more intensive than in pine needles. The greatest differences in reflectance values between the analyzed stands occurred in autumn and equalled on average 1,248 units SRFI for channel 5, and 609 units for channel 7. This was caused by the aging of beech leaves and a decrease in their water saturation due to withering (Ciołkosz et al. 1999), which resulted in higher reflectance for the beech stands.

Vegetation indices

NDVI

The Normalized Difference Vegetation Index (NDVI) (Rouse et al. 1973) is the most popular vegetation index because it can reveal information about changes in biomass quantity, chloro-

phyll content, and drought stress in plants (Liang 2004). The index has the highest values when reflectance is maximal in infrared and minimal in channel red. The near infrared spectrum is sensitive to changes in leaves' structure; the higher the reflectance in this channel, the greater the volume of leaves. The red channel, in turn, is sensitive to chlorophyll content; thus, the lower reflectance in the channel, the greater the content. The two spectra combined may be used to estimate both biomass quantity and chlorophyll content.

Analysis of the graph in Fig. 3 reveals seasonal variation in NDVI for both pine and beech stands. During the vegetation season, variation was greater for beech forests. The average NDVI recorded for this species equalled about 0.337. For pine, the average was almost three times smaller, that is: 0.103. On the other dates during the vegetation season, differences between the two species were also visible. The first three dates were characterized by higher indices in beech stands, which was influenced mainly by higher reflectance values from the near infrared channel. In April, the average difference between pine and beech amounted to 0.094, whereas in July it was 0.122. In September, the average difference was smallest and equalled merely 0.054. During this period, reflectance values for chan-

nel 4 in beech dropped, while they rose for pine. In addition, in comparison with earlier dates, reflectance in channel 4 was higher for pine and lower for beech. The greatest difference in NDVI was recorded in October. At that time, beech stands had decisively lower values than in September. At the same time, NDVI for pine also decreased, but by a smaller amount than for beech. Overall, NDVI in that period was higher for pine stands. At the same time, the variation in the indices recorded for pine stands was greater than for beech.

TVI

The transformed Vegetation Index (TVI) (Rouse et al. 1973) is a modification of NDVI. Analysis of the graph illustrating TVI (Fig. 4) reveals its similarity to Fig. 3, both in regard to the shape of the curves and to the relation between curves generated for pine and beech. According to the graph, indices were higher for beech stands in April, July and September. In April, the average difference between TVI was 0.053; in July it rose to 0.066, whereas in September it was the smallest and equalled 0.032. It is worth noting that in that period the difference between the lowest recorded index for beech and the highest recorded index for pine was merely 0.009. As in

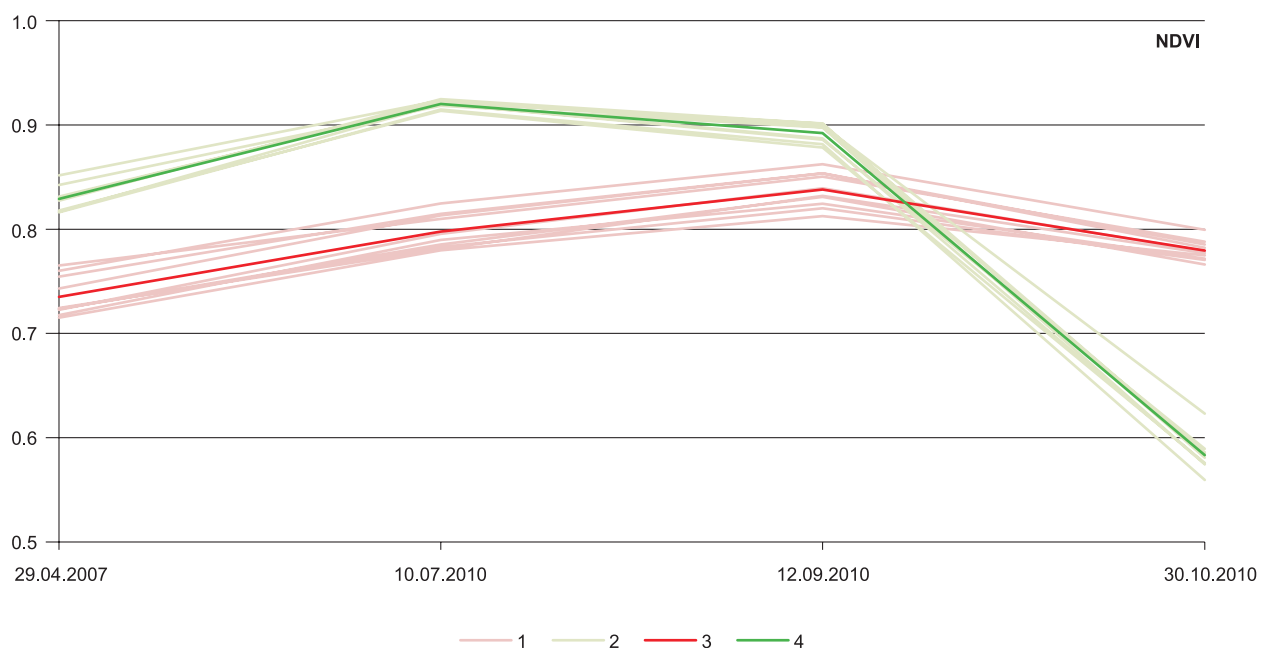


Fig. 3. Variation in the NDVI indices of pine and beech stands on each date in the vegetation season
1 - variation in indices for test areas of pine; 2 - variation in indices for test areas of beech; 3 - average index for pine stand; 4 - average index for beech stand

the case of NDVI, the biggest difference in TVI between beech and pine was recorded in Autumn, when it amounted to 0.120. In October, pine stands had higher measurements.

Green NDVI

As in the case of NDVI, Green Normalized Vegetation Index, or Green NDVI (Gitelson et al. 1996) uses in its calculations indices recorded in the near infrared spectrum. Unlike NDVI, however, this index uses different element; i.e. reflectance value recorded in the green spectrum of radiation. This is because the index is based on an inversely proportional relationship between the green spectrum of radiation and chlorophyll content (Daughtry et al. 2000), and it was precisely for measuring chlorophyll content that the index was created in the first place (Gitelson et al. 1996). Taking into account both the chlorophyll content in leaves and their structure (near infrared channel), Green NDVI may be a useful tool for estimating biomass quantity and chlorophyll content, similar to NDVI.

Analysis of Green NDVI recorded for both tree species (Fig. 5) revealed variation throughout the vegetation season. For beech stands, maximal values occurred in July. For pine this occurred in September. Both months were characterized by

large differences in the indices for both species, which were much higher for beech. The greatest difference in average NDVI was recorded in July and equalled 0.118. In September, it was 0.071. The situation was decisively different in April and October, when Green NDVI for both species were similar. In April, the average for beeches was higher by 0.018, and in October it was lower by 0.006. This cannot serve, however, as a basis for differentiating between the analyzed stands because their recorded indices overlapped.

NDGI

Normalized Difference Greenness Index (NDGI) (Chamard et al. 1991 after Bannari et al. 1995) is based on reflectance values in the visible spectrum of radiation. This index can provide information about differences in the content of various pigments and their variation throughout the entire vegetation season. As was the case with previous indices, NDGI (Fig. 6) during the vegetation season had greater variation in beeches than in pines. This variation was significantly affected by autumn, when indices for beeches dropped below zero. This was because, for beech stands, radiation in the channel red increased in comparison with the channel green. The biggest difference in the average NDGI between beeches and pines was

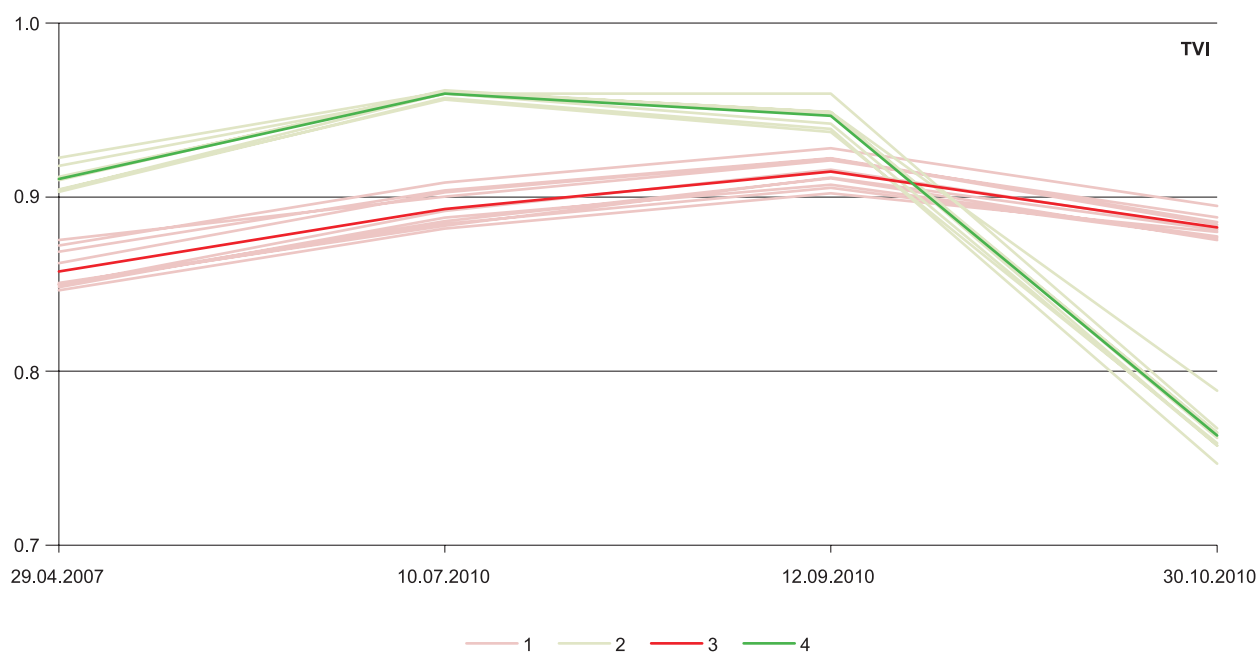


Fig. 4. Variation in the TVI indices of pine and beech stands on each date in the vegetation season
1 - variation in indices for test areas of pine; 2 - variation in indices for test areas of beech; 3 - average index for pine stand; 4 - average index for beech stand

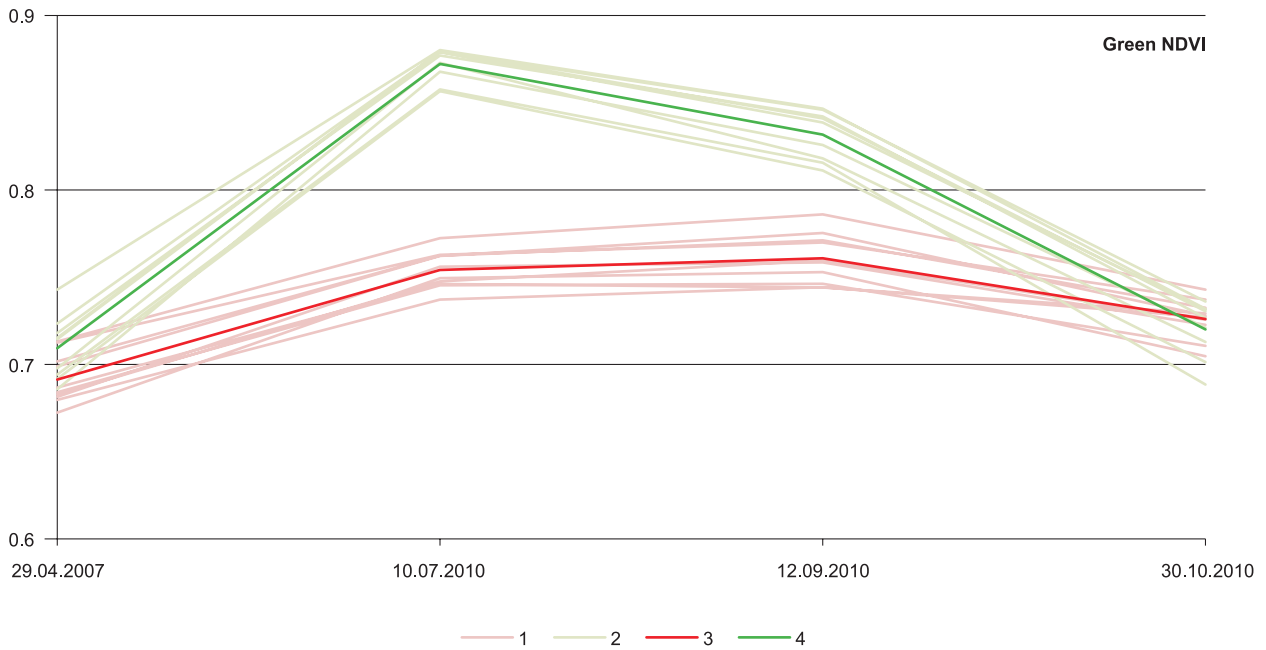


Fig. 5. Variation in the Green NDVI indices of pine and beech stands on each date in the vegetation season
 1 - variation in indices for test areas of pine; 2 - variation in indices for test areas of beech; 3 - average index for pine stand; 4 - average index for beech stand

also recorded in autumn, and equalled 0.359. Differences recorded in September were decisively smaller, but due to an overlap between NDGI for both beech and pine, differentiating between them is not possible. The remaining two months were different in character than September and October: in April and July beech stands had higher indices. In April, the average difference was 0.202, while in

July it was 0.131. April was also characterized by a greater difference due to higher reflectance in the green channel in beech stands.

NDI

Unlike the previous index, Normalized Difference Index (NDI) (McNairn, Protz 1993 after Bannari et al. 1995) is based on reflectance values

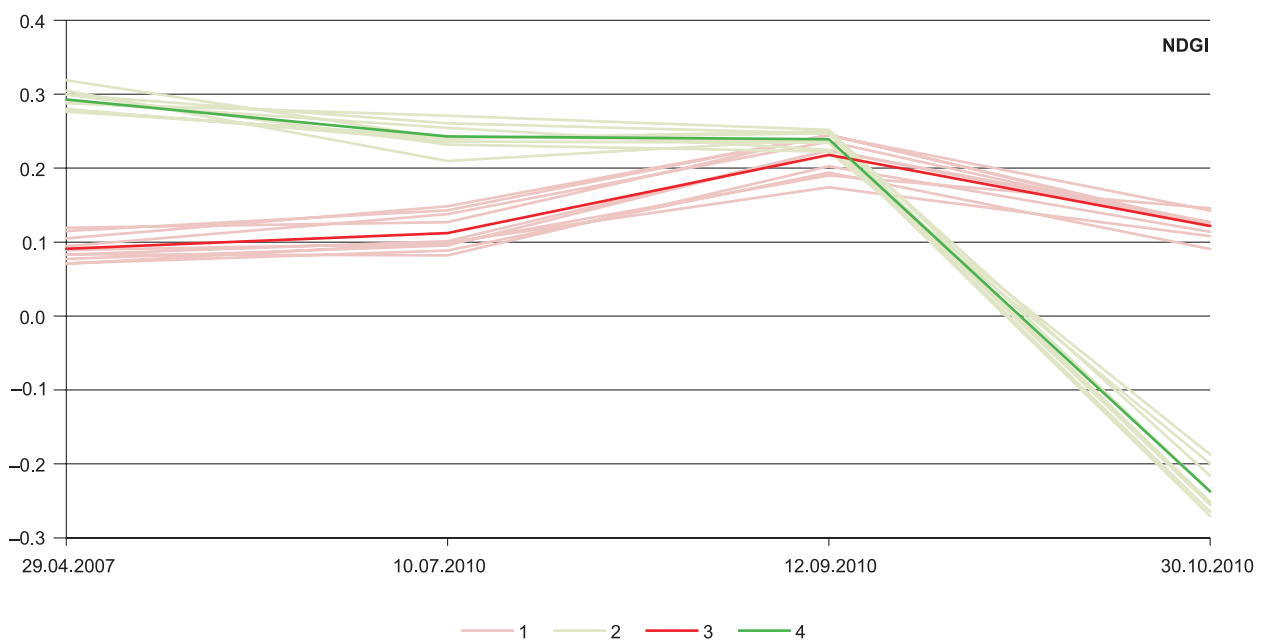


Fig. 6. Variation in the NDI indices of pine and beech stands on each date in the vegetation season
 1 - variation in indices for test areas of pine; 2 - variation in indices for test areas of beech; 3 - average index for pine stand; 4 - average index for beech stand

recorded out of the visible spectrum of radiation. The short-wavelength radiation spectrum is sensitive to water saturation in leaves. In combination with measurements of leaves' volume (by means of near infrared), the index can provide information about variations in water saturation in leaves throughout the vegetation season, which is why the index was initially used in agricultural remote sensing (Piekarczyk 2009). The formula for calculating the index is as follows:

$$NDI = \frac{R_{NIR} - R_{MIR}}{R_{NIR} + R_{MIR}}$$

Analysis of the NDI graph (Fig. 7) reveals that the greatest differences in indices between beech and pine stands were visible in spring and autumn. In April, the average difference between pine and beech stands equalled 0.146. In October, it was almost twice as high and amounted to 0.338. It is also worth noting that in both periods the relationship between the NDI of pine and beech were different – in April they were higher for beech; in October for pine. In autumn, there was also a relationship between NDI and the age of stands, which was visible for both pine and beech. Younger stands had higher indices, which might indicate that in autumn young trees maintain a higher water saturation level than older

ones. That kind of relation was also observed on pine stands in Notecka Forest (Piekarski, Dziesko 2013). During summer, recorded differences in indices were not that significant; in July they overlapped, while in September the highest NDI recorded for a pine stand was equal with the lowest index recorded for a beech stand. In the case of the latter, the trees were between 40 and 55 years old, which made it one of the youngest analyzed test areas. In the case of pine, the lowest recorded index was recorded in the area where trees were 74 years old, which made them one of the oldest in the research area.

Conclusions

The major purpose of this work was to determine quantitative differences in vegetation indices between pine stands in Goleniowska Forest and beech stands in Bukowska Forest. The indices were based on spectral characteristics, and the differences measured on four distinct dates in the vegetation season. Significant differences were discovered between the indices calculated for areas of pine stands and those calculated for beech stands. The reasons for these differences lie in the trees' structure, biochemical attributes and variation throughout the vegetation season. In spring

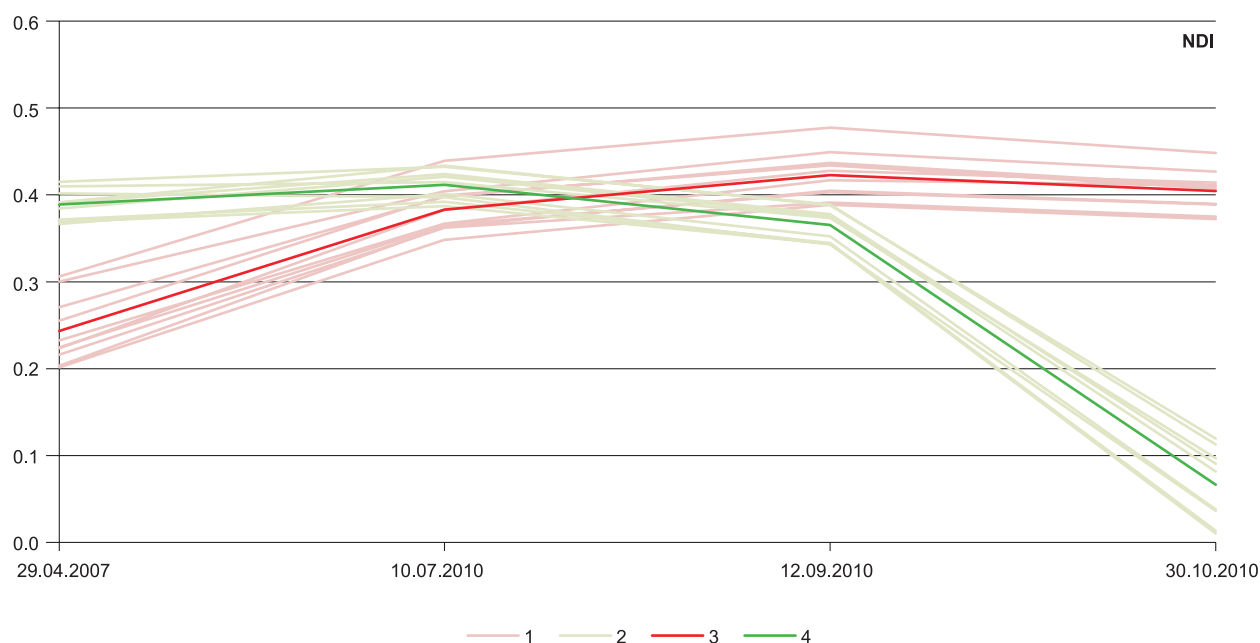


Fig. 7. Variation in the NDI indices of pine and beech stands on each date in the vegetation season
1 – variation in indices for test areas of pine; 2 – variation in indices for test areas of beech; 3 – average index for pine stand; 4 – average index for beech stand

(April), the index that best represented differences between the analyzed stands was NDGI; the difference between the analyzed stands at that time equalled 0.157 SRFI. In early summer (July), the index that most clearly indicated differences between pine and beech was NDVI. At that time, the difference between the indices for beech and pine amounted to 0.089 SRFI units. During late summer (September), the best indicator of differences was Green NDVI, according to which the difference was 0.025 SRFI units. In autumn (October), the index that best showed the differences was again NDGI – in this case, the difference between average for the index for beech and the average index for pine was 0.278 SRFI units. The only indices that allowed for differentiation between the analyzed stands throughout the entire research period were NDVI and its modification, TVI. The remaining indices differentiated between beech and pine only on some of the four dates when the analysis took place.

Performed interpretations allowed to improve remote differentiating stands of pine and beech in different ages. It is worth noting that on the first three dates studied, the widest range of difference in the indices was between young beech stands and the oldest pine stands. In October, the situation was the reverse: the greatest range of difference was between young pine stands and old beech stands.

Acknowledgements

This research was funded by Adam Mickiewicz University in Poznań. The U.S. Landsat project management is thanked for provision of the Landsat 5 TM data. The authors would like to thank the forest inspectorates in Kliniska and Gryfino for sharing their forest survey data.

References

- Bannari A., Morin D., Bonn F., 1995. A Review of Vegetation Indices. *Remote Sensing Reviews* 13: 95–120.
- Białobok S., 1990. *Buk zwyczajny. Fagus Sylvatica L.* Państwowe Wydawnictwo Naukowe, Warszawa-Poznań.
- Borówka R., Friedrich S., Hesse T., Jasnowska J., Kochanowska R., Opęchowski M., Stanecka E., Zyska W., 2004. *Przyroda Pomorza Zachodniego*. Oficyna In Plus, Szczecin.
- Castro K.L., Sanchez-Azofeifa A.G., 2008. Changes in Spectral Properties, Chlorophyll Content and Internal Mesophyll Structure of Senescing *Populus balsamifera* and *Populus tremuloides* Leaves. *Sensors* 8: 51–69.
- Ciołkosz A., Miszański J., Ołędzki J.R., 1999. *Interpretacja zdjęć lotniczych*. Wydawnictwo Naukowe PWN, Warszawa.
- Colombo R., Meroni M., Marchesi A., Busetto L., Rossini M., Giardino C., Panigada C., 2008. Estimation of leaf and canopy water content in poplar plantations by means of hyperspectral indices and inverse modeling. *Remote Sensing of Environment* 112: 1820–1834.
- Daughtry C.S.T., Walthall C.L., Kim M.S., Brown de Colstoun E., McMurtrey J.E., 2000. Estimating Corn Leaf Chlorophyll Concentration from Leaf and Canopy Reflectance. *Remote Sensing of Environment* 74: 229–239.
- de Kok R., Koziół K., Wężyk P., 2005. Zastosowanie klasyfikacji obiektowej wysokorozdzielczych obrazów teledetekcyjnych oraz analiz przestrzennych GIS w kartowaniu drzewostanów. *Roczniki Geomatyki* 3(4): 99–108.
- Domański R., 2002. *Fizjologia roślin z elementami biochemii*. Wydawnictwo Akademii Rolniczej im. Augusta Cieszkowskiego w Poznaniu, Poznań.
- Gitelson A.A., Kaufman Y.J., Merzylak M.N., 1996. Use of a Green Channel in Remote Sensing of Global Vegetation from EOS-MODIS. *Remote Sensing of Environment* 58: 289–298.
- Gitelson A.A., Gritz Y., Merzylak M.N., 2003. Relationships between leaf chlorophyll content and spectral reflectance and algorithms for non-destructive chlorophyll assessment in higher plant leaves. *Journal of Plant Physiology* 160: 271–282.
- Haapanen R., Ek A.R., Bauer M.E., Finley A.O., 2004. Delineation of forest/nonforest land use classes using nearest neighbor methods. *Remote Sensing of Environment* 89: 265–271.
- Kieliszewska-Rokicka B., 1993. Transport. In: Białobok S., Boratyński A., Bugała W., *Biologia sosny zwyczajnej*. Sorus, Poznań-Kórnik: 125–137.
- Kim M., Madden M., Warner T.A., 2009. Forest Type Mapping using Object-specific Texture Measures from Multispectral Ikonos Imagery: Segmentation Quality and Image Classification Issues. *Photogrammetric Engineering & Remote Sensing* 75: 819–829.
- Kumar L., Schmidt K., Dury S., Skidmore A., 2002. Imaging Spectrometry and Vegetation Science. In: van der Meer F.D., de Jong S.M., *Imaging Spectrometry. Basic Principles and Prospective Applications*, Springer, Dordrecht.
- Liang S., 2004. *Quantitative Remote Sensing of Land Surfaces*. Wiley-Interscience, New Jersey.
- Linder S., 1972. Seasonal Variation of Pigments in Needles A Study of Scots Pine and Norway Spruce. Seedlings Grown under Different Nursery Conditions. *Studia Forestalia Suecica* 100: 5–37.
- Mallinis G., Koutsias N., Tsakiri-Strati M., Karteris M., 2008. Object-based classification using Quickbird imagery for delineating forest vegetation polygons in a Mediterranean test site. *ISPRS Journal of Photogrammetry & Remote Sensing* 63: 237–250.
- Mirek Z., Nikiel A., Paul W., Wilk Ł., 2005. *Ostoje roślinne w Polsce*. Instytut Botaniki im. W. Szafera Polskiej Akademii Nauk, Kraków.
- O'Neill A.L., Kupiec J.A., Curran P.J., 2002. Biochemical and reflectance variation throughout a Sitka spruce canopy. *Remote Sensing of Environment* 80: 134–142.
- Oleksyn J., 1990. Wymiana gazowa i gospodarka wodna. In: Białobok S., *Buk zwyczajny. Fagus Sylvatica L.*, Państwowe Wydawnictwo Naukowe, Warszawa – Poznań: 97–122.

- Paris J., 2005. FAQs by Jack B, *Tutorials about Remote Sensing Science and Geospatial Information Technologies*. Online 18.05.2012 - <http://www.microimages.com/sml/smlscripts/ParisScripts/FAQsbyJackB.pdf>
- Piekarczyk J., 2009. Remote sensing in agriculture. In: Zwoliński Z. (ed.), *GIS - platforma integracyjna geografii*. Bogucki Wydawnictwo Naukowe. Poznań, 55-66.
- Piekarski P., Dzieszkowski P., 2013. Wpływ wieku drzewostanów na ich charakterystyki spektralne i wartości wybranych wskaźników wegetacyjnych. *Roczniki Geomatyki* 11: 67-79.
- Piekarski P., Zwoliński Z., 2012. Dywersyfikacja odbicia spektralnego i wskaźników wegetacji dla drzewostanów sosnowych i bukowych, Nizina Szczecińska. In: Zwoliński Z. (ed.) *GIS - teledetekcja środowiska*. Bogucki Wydawnictwo Naukowe. Poznań: 31-60.
- Przybylski T., 1970. Morfologia. In: Białobok S., *Sosna zwyczajna Pinus silvestris L.* Państwowe Wydawnictwo Naukowe, Warszawa - Poznań: 86-123.
- Rąkowski G., Wójcik J., Walczak M., Smogorzewska M., Brodowska M., 2005. Województwo zachodniopomorskie. In: Rąkowski G., *Rezerваты przyrody w Polsce Północnej*, Instytut Ochrony Środowiska, Warszawa: 11-96.
- Rouse Jr. J.W., Haas R.H., Schell J.A., Deering D.W., 1973. Monitoring the vernal advancement and retrogradation (Green wave effect) of natural vegetation. *Progress Report RSC*: 1-112.
- Sims D.A., Gamon J.A., 2002. Relationships between leaf pigment content and spectral reflectance across a wide range of species, leaf structures and developmental stages. *Remote Sensing of Environment* 81: 337-354.
- Smith M.-L., Ollinger S.V., Martin M.E., Aber J.D., Hallett A., Goodale C.L., 2002. Direct estimation of aboveground forest productivity through hyperspectral remote sensing of canopy nitrogen. *Ecological Applications* 12(5): 1286-1302.
- Virk R., King D., 2006. Comparison of Techniques for Forest Change Mapping Using Landsat Data in Karnataka, India. *Geocarto International* 21(4): 49-57.
- Weng Q., 2011. *Advances In Environmental Remote Sensing, Sensors, Algorithms, and Applications*. CRC Press, Taylor & Francis Group.
- Wężyk P., Wertz B., Waloszek A., 2003. Skaner hiperspektralny AISA (Airborne Imaging Spectrometer for Applications) jako narzędzie pozyskiwania informacji o ekosystemie leśnym. *Materiały Ogólnopolskiego Sympozjum Geoinformacji. Geoinformacja zintegrowanym narzędziem badań przestrzennych*, Wrocław-Polanica Zdrój 13B: 485-496.
- Zajączkowski G., Wężyk P., 2004. Techniki teledetekcyjne w inwentaryzacji urządzeniowej lasu. *Roczniki Geomatyki* 2(4): 41-50.
- Zheng D., Rademacher J., Chen J., Crow T., Bresee M., Le Moine J., Ryua S.-R., 2004. Estimating aboveground biomass using Landsat 7 ETM+ data across a managed landscape in northern Wisconsin, USA. *Remote Sensing of Environment* 93: 402-411.
- Zwoliński Z., (ed.), 2012. *GIS - remote sensing of environment*. Bogucki Wydawnictwo Naukowe, Poznań.