

PART I. ARTICLES

Tomasz Kargol, Krzysztof Ślusarek (*Jagiellonian University, Kraków*)

“FROM THE EAST, THIS TOWN BORDERS THE RIVER
ZBRUCH BORDERING POLAND...”
TOWNS IN THE GALICIA, VOLHYNIA AND PODOLIA
BORDERLAND IN THE LATE 18TH CENTURY:
URBAN, PUBLIC, POLITICAL, AND SOCIO-ECONOMIC SPACES

doi:10.2478/sho-2018-0001

Partitioning of Poland and the establishment of new political borders had a great impact on social and economic life. It resulted in the closing of trade routes and division of real estate, as well as of former units of state and church administration. Another emerging problem involved *su-jets mixtes*, desertion, and defection.

The new geo-political situation of Poland after 1772 was also reflected in the functioning of towns and villages. The objective of this article is to discuss the situation of towns in Galicia, located on the eastern frontier of the Austrian partition, near the Polish-Austrian border, and since 1793 – the Austrian-Russian border.

This problem is already present in historiography owing to two publications: by B. Kuzmany on Brody, and by P. Adelsgruber, L. Cohen and B. Kuzmany [Adelsgruber P., Cohen L., Kuzmany B. 2011] on relations between the frontier towns on the two sides: Brody-Radziwiłów, Podwołoczyska-Wołoczyska, and Husiatyn-Gusiatyn [Kuzmany B. 2011]. These works adopted a wider perspective on the problem of frontier towns, both chronologically (they covered the entire “long” 19th century) and geopolitically (the border on the Zbruch river as a periphery of two empires, Austrian and Russian) [Augustynowicz Ch. 2015].¹

¹ The paper by Ch. Augustynowicz on Sandomierz can be included in this perspective as well. See: Ch. Augustynowicz, *Grenze(n) und Herrschafte(n) in der kleinpolnischen Stadt Sandomierz 1772–1844*, Wien 2015.



Il. 1. Podwołoczyska na Mapie topograficznej Galicji (1779-1783) z Archiwum Wojennego w Wiedniu (tzw. mapie Miega).

Źródło: <https://mapire.eu/en/map/firstsurvey-galicia/?bbox=2907392.2490548375%2C6364137.420395244%2C2920281.442949425%2C6367959.271809503&layers=osm%2C144>

The present article also fits into the above-mentioned field of study. However, it covers a slightly shorter period – specifically the 1780s – and concentrates on the exact time when the frontier towns had to adapt to their new geopolitical, social, and economic conditions. Such considerations were inspired by the first results of the research project entitled “On the border of cultures and nations. Galician towns and villages in the Josephine cadastral survey”,² carried out at the Jagiellonian University Institute of History. This grant aims at developing a unique online database of towns and their inhabitants, as well as defining the components of social space in the towns and villages in Galicia in the late 18th century. The source literature for the study includes massive, mutually complementary historical sources from the 1780s: the Josephine cadastre and the so-called “municipal descriptions”.

Measurements for the Josephine cadastre were performed in the years 1785–1788. Their scope included the entire territory of Galicia. Most of the materials used during this operation survived until the present times, in-

² The present publication was developed as part of the project “On the border of cultures and nations. Towns in Galicia in the Josephine cadastral survey”, financed by the National Science Center; registry number 2016/22/M/HS3/00163.

cluding the following documents on the towns: descriptions of borders, fields, and squares; measurement books, and registries containing information of the amount of land owned by the inhabitants, the town's landlord, and the rectory. The most valuable and most important part of the cadastre are the measurement books, which list all plots in a town. Information was provided in the following order: the topographic number of the plot, name of the owner, type of land (farmland, meadow, garden, pasture, forest), the size of the plot, and potential yield from the plot.³

Information from the Josephine cadastre is well complemented by the so-called municipal descriptions, drawn up on a large scale after the famous regulatory patent of Joseph II of February 10, 1789. These were composed of two main parts: the descriptions of the urban assembly, and the attachments. The descriptions of the urban assembly provided general information on the town and presented a list of feudal duties that the inhabitants had to fulfill. First of all, the document specified how many owners the town had, and then it listed categories of inhabitants, along with their duties towards the owner. The attachments included a list of all inhabitants with the following information: name, number of the house and land, income, days of corvee work, the annual amount of tribute, and the total amount of rent.

These sources were frequently used by Polish and Ukrainian researchers, and less frequently by researchers from Austria and Germany. However, in most cases, research based on this information concerned rural areas. In this context, one must mention the publications written in the first half of the 20th century, e.g. by Józef Fierich, Roman Rozdolski, Jan Rutkowski, and Wincent Styś [Fierich J. 1950; Rozdolski R. 1961, Rozdolski R. 1962, Rutkowski J. 1917, Styś W. 1932]. At present, particularly since the 1990s, both sources are used much more broadly. Three directions of research dominate: general reflections on the economy of Austria and Galicia; monographs concerning particular problems, including microtoponymy and sociotopography; and regional and local studies. Regarding the former, notable examples include the register based on the Josephine cadastre for the western districts of Galicia, developed by Alicja Falniowska-Gradowska (recently in cooperation with Franciszek Leśniak)

³ For more on the usefulness of the Josephine registry and municipal descriptions in research on the history of towns, see: K. Ślusarek, *Materiały podatkowe jako źródło do dziejów miast galicyjskich w czasach józefińskich*, (in:) *Galicyjskie miasta w epoce zmian społeczno-politycznych w Europie Środkowo-Wschodniej w XVIII–XIX wieku*, collected works (eds). T. Kargol, B. Petryszak, K. Ślusarek, Kraków–Lwów 2018, p. 269–288.



Il. 2. Tarnoruda na Mapie topograficznej Galicji (1779-1783) z Archiwum Wojennego w Wiedniu (tzw. mapie Miega).

Źródło: <https://mapire.eu/en/map/firstsurvey-galicia/?bbox=2910314.713142824%2C6341913.464701303%2C2936093.1009319997%2C6349557.16752982&layers=osm%2C144>

[Falniowska-Gradowska A., 1982; Falniowska-Gradowska A., Leśniak F. 2009], as well as the publications by such authors as Werner Drobesh and Reiner Feucht [Drobesh W. 2009; Feucht R. 2008]. Noteworthy monographs include works by Mariusz Kulczykowski on the weaving peasants, Krzysztof Ślusarek on poor noblemen, or Franciszek Wasyl on the Armenian community [Kulczykowski M. 1972; Kulczykowski M. 1976; Ślusarek K. 2011; Wasyl F. 2015]. In the Ukrainian historiography, research on microtoponymy (Lyubov Bilinska, Olga Luzhetska), antro-



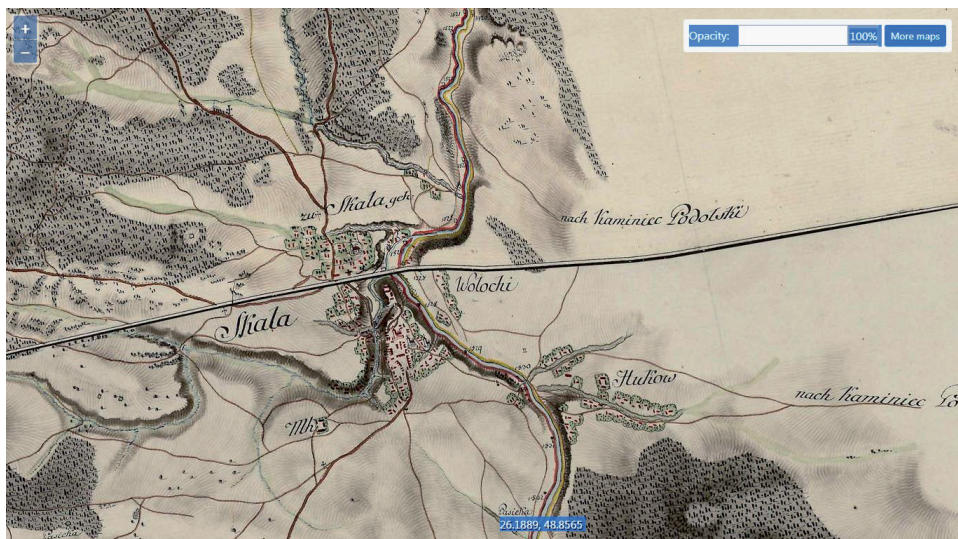
Il. 3. Husiatyn na Mapie topograficznej Galicji (1779-1783) z Archiwum Wojennego w Wiedniu (tzw. mapie Miega.

Źródło: <https://mapire.eu/en/map/firstsurvey-galicia/?bbox=2910759.982116531%2C6284734.921209445%2C2923649.1760111186%2C6288556.772623705&layers=osm%2C144>

ponomy (Nataliya Vyrsta), and sociotopography (Mariya Dolinska, Mariya Pohorilko) has been increasing in popularity [Білінська Л. 2009; Лужецька О. 2014; Вирста Н. 2013; Долинська М. 2006; Долинська М. 2018; Долинська М., Погорілко М. 2015]. Within local and regional studies, the dominant activity is publishing data from the Josephine cadastre as a source material concerning specific towns (see e.g. editorial activity of Józef Szymański⁴).

The Josephine cadastre and municipal descriptions were relatively rarely used in research on urban issues. Even though these materials were among essential sources in the research conducted by Łukasz Jewuła [Jewuła Ł. 2013], he used the cadastre only in the cases of towns selected for the study sample. In Austrian historiography, the activity of the already mentioned Paulus Adelsgruber, Laurie Cohen, and Bőrries Kuzmany can be considered part of this research current. On the other hand, in studies by Ukrainian researchers (who had easier access to the Josephine cadastre), cartographic and urban studies prevail, discussing the directions of urban development (Halyna Petryshyn, Ulyana Ivanochko), with some re-

⁴ E.g. *Państwo wojnickie w metryce józefińskiej z 1785–1787 roku. Wojnicz, Zamoście, Ratnawy i Łopień*, ed. J, Szymański, Wojnicz 2000.



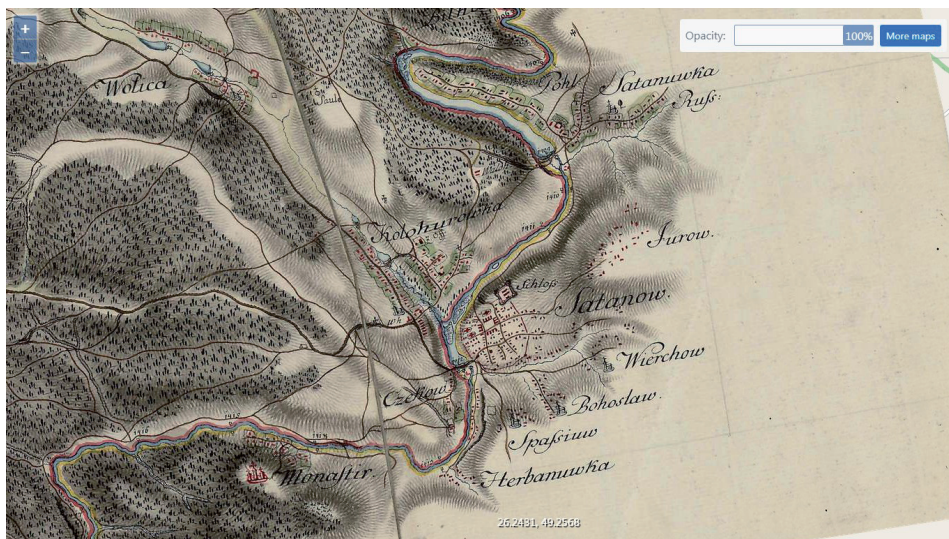
Il. 4. Skala na Mapie topograficznej Galicji (1779-1783) z Archiwum Wojennego w Wiedniu (tzw. mapie Miega).

Źródło: <https://mapire.eu/en/map/firstsurvey-galicia/?bbox=2911557.3388647386%2C6248726.709750129%2C2924446.532759326%2C6252548.561164388&layers=osm%2C144>

gional and local research (Vasyl Laba, Leonid Timoshenko) [Іваночко У. 2006; Лаба В. 2001; Петришин Г., Іваночко У. 1999].

The “On the border of cultures and nations. Towns in Galicia in the Josephine cadastral survey” project aims at examining all towns and villages in the easternmost administrative districts of Galicia, namely the Brodzki (Złoczkowski), Tarnopolski, Zaleszczycki, Stanisławowski and Brzeżański districts. Preliminary results of these investigations are very promising, providing evidence that taxation registries offer broad research opportunities, especially in terms of analyzing urban spaces and the social structure of inhabitants.⁵ One of the most interesting problems

⁵ The first results of the research have already been published. See e.g.: V. Dolinowski, *Соціально-професійна структура міщан Олеська на підставі інвентаря будинків 1789 р.*, (in:) *Галицькі міста в епоху змін соціально-політичних*, p. 21–50; M. Kańkowski, *Miasto Józefów w świetle opisań urbarialnych*, (in:) *Галицькі міста в епоху змін соціально-політичних*, p. 123–130; T. Kargol, *Konfrontacja metryki józefińskiej z innymi źródłami historycznymi na przykładzie topografii i społeczeństwa Brodów w II połowie XVIII wieku*, (in:) *Галицькі міста в епоху змін соціально-політичних*, p. 131–148; K. Ruszała, *Spoleczeństwo miasteczka galicyjskiego w pierwszych latach rządów austriackich w świetle pierwszego katastru gruntowego, tzw. metryki józefińskiej na przykładzie Jasła*, [in:] *Spoleczeństwo i gospodarka Galicji w latach 1772–1867. Źródła i perspektywy badań. Zbiór studiów* (eds) T. Kargol and K. Ślusarek, Kraków



Il. 5. Satanów na Mapie topograficznej Galicji (1779-1783) z Archiwum Wojennego w Wiedniu (tzw. mapie Miega).

Źródło: <https://mapire.eu/en/map/firstsurvey-galicia/?bbox=2915576.825631284%2C6317135.62650821%2C2928466.0195258716%2C6320957.477922469&layers=osm%2C144>

arising from the analysis of the Josephine cadastre is the impact of the partitions of Poland (and the resulting changes of borders) on urban space.

In the historical areas of Red Ruthenia, Volhynia and Podolia, towns were located by rivers and streams – the most important ones were the Dniester and its tributaries: Strypa, Seret, and Zbruch. Establishing the new border on the river Zbruch led to the division of towns located on its banks into two parts. For instance, a larger part of Tarnoruda ended up on the Polish side, along with the parish church and the Tarnoruda outskirts. This part was referred to as “Polish” or “New” Tarnoruda, while the other was referred to as “Russian” or “Old” Tarnoruda. Tarnoruda was a part of a larger Grzymałów estate, which in the late 18th century belonged to Izabela Czartoryska-Lubomirska⁶, and later to Konstancja Lubomirska-Rzewuska Nestorow R. 2008: 321-322]. In the north, Tarnoruda bordered the Tarnoruda Pond, which was also divided by the border between Austria and Poland.

2014, p. 129-144; G. Zamojski, *Nowy Targ i jego mieszkańcy w świetle metryki józefińskiej*, (in:) *Galiczyjskie miasta w epoce zmian społeczno-politycznych*, p. 289-313.

⁶ National Archive in Kraków, Antoni Schneider’s files sign. 1848, no number.



Il. 6. Czarnokozienice na Mapie topograficznej Galicji (1779-1783) z Archiwum Wojennego w Wiedniu (tzw. mapie Miega).

Źródło: <https://mapire.eu/en/map/firstsurvey-galicia/?bbox=2918732.2591760745%2C6215809.141883704%2C2931621.453070662%2C6219630.993297963&layers=osm%2C144>

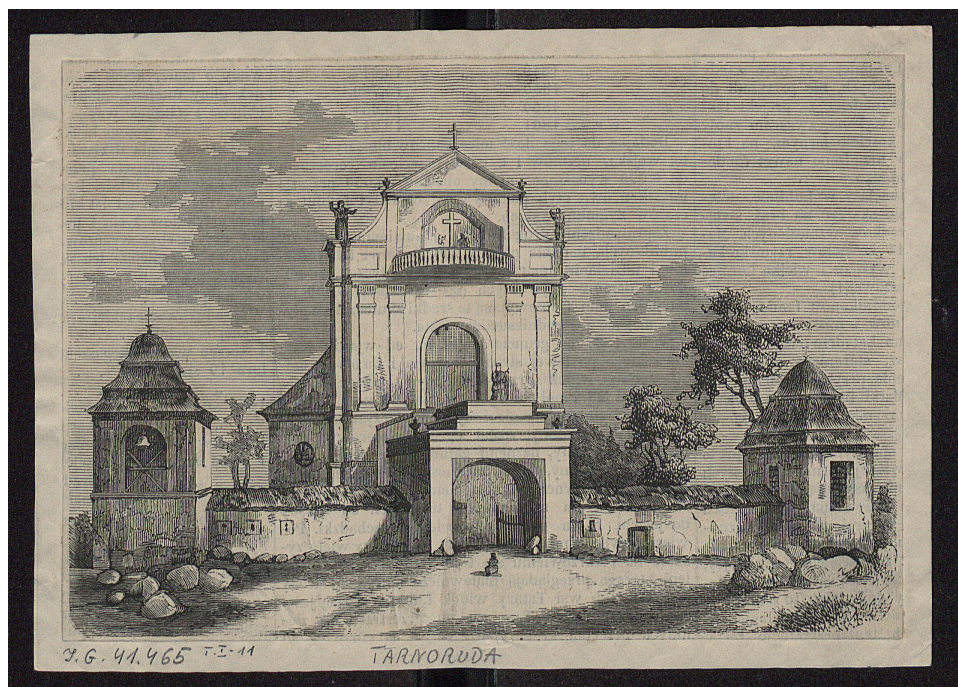
Another town picturesquely located by the river Zbruch was Czarnokozienice (Czarnokozienice). The river divided the town in such a way that the majority of the town remained in Poland. The part of the town on the right bank, which ended up in Galicia, did not form a separate town.

In the case of other towns, the new course of the border meant that their larger part ended up in Galicia, as was the case e.g. in Husiatyn. The whole town of Skala ended up in Galicia, and the only part left within the Polish borders was its outskirt – Wołochy.

The proximity of the border affected ownership relations in towns. Their inhabitants often owned land on the other side of the border, and the owners of municipal buildings also lived in cross-border towns.

Such was the case e.g. in the Galician part of Tarnoruda, where all the inhabitants' land (apart from some gardens) was located on the other side of the border, on the eastern bank of the river Zbruch ("the inhabitants of Tarnoruda have all their land outside the border"). Therefore, there was no farmland or farms in this town, only gardens and the pond.⁷

⁷ National Central Historical Archive of Ukraine in Lviv (later referred to as NCHAU in Lviv), f. 19 Josephine Registry, description 17, case 175, c. 14.



Il. 7. Podbielski Bronisław, *Kościół w Tarnorudzie*, 1861, grafika.
Źródło: Biblioteka Narodowa, <http://polona.pl/item/5564013>

In Skała, some of the subjects lost the land that ended up on the Polish side and were banned from working it.⁸

Some lands in Husiatyn were owned by inhabitants of Kuźmińczyk, a town in the left bank of the Zbruch, within the Polish borders. These included the Krzyżowa, Trzaskowa Dolina and Na Mogiłkach fields, a farm-land with a total size of 142 morgens and 1477 fathoms.⁹

In some towns located on or near the border, there was also a problem of houses or facilities abandoned by owners who permanently lived outside the borders of Galicia. One example was Olesko. According to 1788 data, some houses in this town were abandoned because their owners lived on the other side of the border. For instance, the description of an estate belonging to Aron Tajlebaum had the following annotation: "You could once stay in this house, but now it is empty, because the owner lives outside the border."¹⁰

⁸ NCHAU in Lviv, fond 19: Josephine Registry, description 10, case 232, c. 34.

⁹ NCHAU in Lviv, fond 19: Josephine Registry, description 17, case 242, c. 83.

¹⁰ V. Dolinovskyi, *Соціально-професійна структура міщан Олеська*, p. 76.

In the towns divided by the Zbruch, old technical and transport infrastructure remained, which was adjusted to pre-partition borders of the town. In Tarnoruda, roads led “to the border”,¹¹ while in Husiatyn – to “the border bridge” or “to the river”.¹² The two parts of Husiatyn were connected by a bridge, there was also a causeway across the river.¹³

The border on the Zbruch also led to the division of land estates within which towns played the role of private administration centers and residences for estate owners.

In the Galicia and Podolia borderland, the border cut across the Skała crown land. According to the description from 1784, it comprised the town of Skała and a number of villages, 7 of which ended up in Austria: Iwanków, Gusztynek, Bereżanka Mała, Łosiacz, Dawidowce i Słobódka, Kołodróbka, and Synków. The following villages by the river Zbruch ended up in Poland: Wołochy, Huków, Latawa, Krasilów, Maraniówka, and Jarosławka¹⁴. In Austria, the Skała crown land and the town of Skała shared the fate of other royal and church estates: they were acquired by the treasury and then sold to private individuals. Under these circumstances, the former Skała crown land became the property of countess Katarzyna Potocka Kossakowska (who received the Skała land from the Austrian Treasury in exchange for salt works), and later, of the Gołuchowski family.¹⁵

In Galicia, towns also played the role of religious centers, where parishes and deaneries were based. For instance, in Husiatyn around the year 1772, there were 11 temples of various denominations, and in 1785, there were two Roman Catholic churches, including one belonging to the Bernardine order [Kwiecińska E. 2016: 63-65]. Parishes, which operated in towns, also served the neighboring villages. In the case of frontier towns, the new border also divided dioceses, deaneries, and parish districts.

Before the partitions, towns by the river Zbruch belonged to the Kamieniec diocese. After the 1st partition, the bishop of Kamieniec, Adam Stanisław Krasieński, lived in Galicia and managed the Austrian part of the

¹¹ NCHAU in Lviv, fond 19: Josephine registry, description 19, case 175, c. 8v.

¹² NCHAU in Lviv, fond 19: Josephine registry, description 17, case 242, c. 2v, 10v.

¹³ NCHAU in Lviv, fond 19: Josephine registry, description 17, case 242, c. 7v.

¹⁴ NCHAU in Lviv, fond 453, description 1, case 2163, c. 1-9.

¹⁵ The Gołuchowski family only became owners of a part of the former Skała crown land taken over by countess Kossakowska, as in 1819, some villages had other owners, e.g. Dawidkowce was owned by Eliasz Mochnacki, and Gusztynek by Kulczycki. NCHAU in Lviv, fond 146: Galicia Governance, description 19, case 4938, c.7v-12.

diocese. In 1782, emperor Joseph II incorporated the Galician part of the Kamieniec diocese into the Lviv archdiocese. It included 10 parishes in two deaneries, Jazłowiecki and Czarnokozienski: Borszczów, Budzanów, Husiatyn, Jagielnica, Sydorów, Jazłowiec, Krzywce, Skała, Tłuste and Tarnoruda. Due to protests by the bishop, the clergy, and the Pope, the emperor later revoked this decision. The authorities in Vienna aimed at aligning the national borders and church administrative units, and therefore in 1784, the following parishes were incorporated into the Lviv archdiocese: Husiatyn, Tłuste, and the Galician part of the Tarnoruda parish, while Czortków was incorporated into the Kamieniec diocese. In 1800, the Galician part of the Kamieniec diocese was incorporated into the Lviv archdiocese. This included 3 parishes in the Tarnopol deanery and 7 in the Jazłowiec deanery (Borszczów, Czerwonogród, Jazłowiec, Krzywce, Skała, Tłuste, Zaleszczyki). The Pope did not authorize these changes until 1819 [Krętosz J. 1996: 32-33].

The problems related with adjusting the church structures to the new political borders were present not only at the central level in Vienna or at diocese level, but also in particular parishes.

In Tarnoruda, a Roman Catholic church built by the Czartoryski family foundation in the years 1748-1754, remained on the Polish side, which later became part of the Russian territory. In the Austrian part of Tarnoruda, which was left without a temple, a local chaplaincy was created in 1783, which was meant to serve soldiers and customs officials. In all likelihood, this is when a wooden church was erected, though as early as 1790, it was already in a bad condition. In 1787, the Josephine registry mentioned "a rundown, old brick chapel". Churches like this could by no means satisfy the needs of the inhabitants. A new brick temple was built in 1816, funded by the owner of the town, Izabela Czartoryska Lubomirska. It was consecrated in 1827. In terms of design, the temple resembled the church on the other side of the river Zbruch (with regards to the facade, artistic details). This resemblance to the original parish church from the period before partitions was probably deliberate.¹⁶ The chaplaincy was turned into a parish as late as the 1890s [Nestorow R. 2008: 322-323].

In the case of Galician urban parishes, one problem was the loss of benefices that ended up outside the border.

¹⁶ NCHAU in Lviv, fond 19: Josephine registry, description 19, case 175, c. 3v; R. Nestorow, *Kościół parafialny*, p. 327-328.

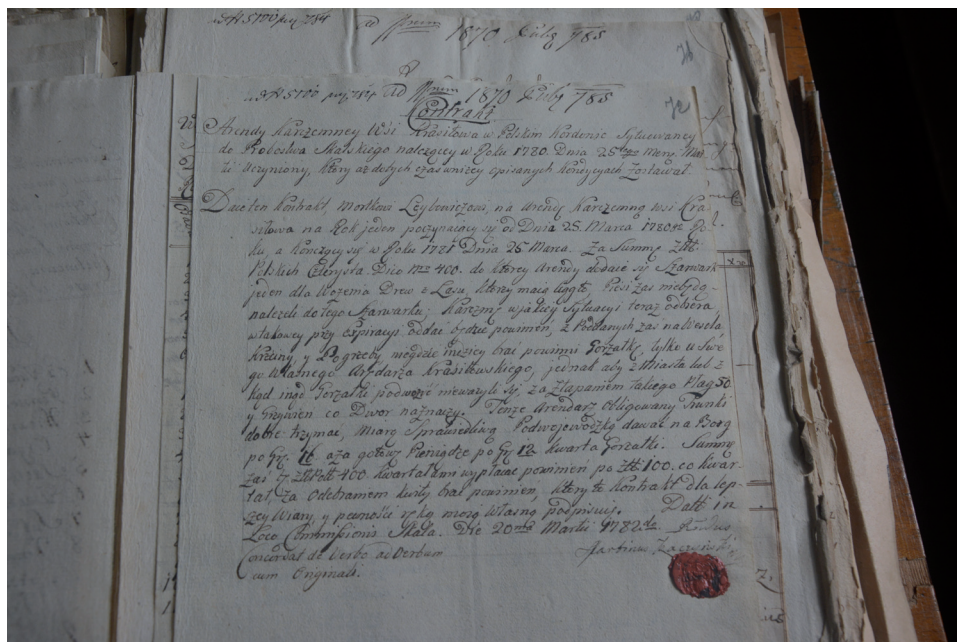
Il. 8. Kopia z 1782 r. inwentarza wsi Krasylów, leżącej w Rzeczypospolitej Polskiej, a w latach 1743-1781 r. użytkowanej przez proboszczów skalskich w zamian za rezygnację z dziesięcin z całego starostwa skalskiego.

Źródło: Centralne Archiwum Historyczne Ukrainy we Lwowie, fond 146: Namiestnictwo Galicyjskie, opis 13, sprawa 561, k.73-73v.

In Husiatyn, the local parish had benefices that remained on the Polish side. The Austrian authorities compensated this loss by transferring the benefices of the Bernardine monastery, which was dissolved in 1786. The monastic church was turned into a parish church, and monastic buildings – into a rectory and the town hall.¹⁷

The parish in Skała had benefices that partially remained within the borders of the Polish Commonwealth. These were closely linked with the estates belonging to the Skała crown land. Under an agreement between Adam Tarło, the tenant of the Skała crown land, and the parish priest in Skała, the latter obtained profits from the village of Krasylów, and in return he withdrew from collecting tithe in the whole Skała crown land. The agreement remained in force until 1781, that is until the death

¹⁷ NCHAU in Lviv, fond 187: C.k. National Accountancy Office in Lviv, description 1, case 183, c. 5.



Il. 10. Kopia kontraktu na dzierżawę propinacji we wsi Krasylów między proboszczem skalskim Janem Alojzjum Aleksandrowiczem a Mortkiem Lejbowiczem z 1780 r.
 Źródło: Centralne Archiwum Historyczne Ukrainy we Lwowie, fond 146: Namiestnictwo Galicyjskie, opis 13, sprawa 561, k.72.

of Jan Alojzy Aleksandrowicz, the parish priest of Skała and the bishop of Chełm.¹⁸ After his death, Krasylów was taken away from the Skała priests, as it was not part of the Skała parish, and the Skała parish priest resumed the collection of tithe in those villages of the Skała crown land that were located in the Austrian part.¹⁹

For almost 10 years after the first partition (until 1781), the parish priest in Skała obtained profits from both Galicia and Poland. In Galicia, the income of the parish in Skała included tithe from the villages of Łanowce and Głęboćek, and the town of Jezierzany. Interestingly, these villages were in the territory of the Borszczów parish. In towns of the Skała crown land (Skała, Iwanków, Guszynek, Bereżanka Mała, Łosiacz, Dawidkowce,

¹⁸ Jan Alojzy Aleksandrowicz (1728–1781) – the Chełm bishop in the years 1780–1781. Before that he was a canon in the Lviv Cathedral Chapter and a Warsaw official. A. Kossowski, *Jan Alojzy Aleksandrowicz*, in *Polski Słownik Biograficzny*, vol. 1. Polska Akademia Umiejętności, 1935, p. 68.

¹⁹ NCHAU in Lviv, 146/13/562, c. 55–56.

Kołodróbka, Synków), tithe was not collected in this period (in exchange for the lease of Krasifów). The parish's budget can be divided into the part coming from Galicia and from abroad. According to the summary from 1782, for the previous year, the income in Galicia was 290 gulden and 30 kreuzers, and income from the Polish Commonwealth – 1023 gulden and 21 kreuzers (total: 1313 gulden and 51 kreuzers). Spendings were divided geopolitically – Galician spendings amounted to 454 gulden and 15 kreuzers, and Polish – to 573 gulden and 31.5 kreuzers.²⁰ For the parish in Skała, the most important source of income within the borders of the First Republic of Poland was the Krasifów village. According to the 1781 inventory, the annual income from this village was 1517 Polish złoty and 14.66 groszy.²¹ The Skała parish priest successfully administered this village – in 1780, he signed a one-year contract with a Jew, Mortek Lejbowicz,²² to lease a public house in Krasifów for 400 Polish złoty.

Another problem for the parish priests was the recovery of interest on capital belonging to lands on the other side of the border. In the case of Skała, this was capital belonging to the Żwaniec²³ and Zbrzyż²⁴ estates. In Żwaniec, the capital amounted to 7000 Polish złoty (equivalent to 1750 gulden). Interest was not paid out regularly. Upon the recommendation of the Zaleszczyń district office sent to Maciej Lanckoroński, the Żwaniec governor Tadeusz Berezowski wrote in 1784 that this capital cannot be transferred to the territory of another country without the permission of the Polish parliament, unless there was an exchange of capital, i.e. capital belonging to estates in Galicia were transferred to the Church in Poland.²⁵

The capital belonging to Zbrzyż was 8000 Polish złoty (2000 gulden), with a 3.5% interest rate. The amount of 2000 gulden was distributed in a following way: 1250 gulden to the Trinitarian order, and 750 gulden

²⁰ NCHAU in Lviv, fond 146: Galicia Governance, description 13, case 561, c.37v-38.

²¹ NCHAU in Lviv, fond 146: Galicia Governance, description 13, case 561, c. 73.

²² NCHAU in Lviv, fond 146: Galicia Governance, description 13, case 561, c. 72.

²³ Żwaniec – a town in Podolia, at the mouth of the Żwaniec river flowing into Dniester. In the second half of the 18th it was the central estate of the Maciej Lanckoroński demesne. See *Słownik geograficzny Królestwa Polskiego i innych krajów słowiańskich*, Volume XIV, Warsaw 1895, p. 872–873.

²⁴ Near Skała, there were two towns with the same name – a village by the river Zbruch, north of Skała, and a town by the river Zbruch in the Republic of Poland, and later in Russia (which also functioned under the names Zbrzezcie, Brzezcie, Brzezcie Nowe). The bequest likely referred to the town, as later, it was transferred from the Skała parish to Kamieniec diocese.

²⁵ NCHAU in Lviv, fond 146: Galicia Governance, description 13, case 562, c. 65.



Il. 11. Pozdrowienie z Podwołoczysk. Widok ogólny. Granica. Pocztcówka [1906].

Źródło: Biblioteka Narodowa, <https://polona.pl/item/pozdrowienie-z-podwoloczysk-widok-ogolny-granica,MzcyNDc3/0/#info>

for the support of the poor.²⁶ The capital from Zbrzyż seems to have been transferred to the church in Kamieniec Podolski.

Gradually, the income of parishes was adjusted to political borders. In their summary of income for the year 1803, the parish in Skała did not list income from the Krasilów village or from the capital belonging to the aforementioned estates, but tithe was collected from towns in the former Skała crown land. Thus, the contract with Adam Tarło expired. The parish in Skała lost the lease of Krasilów but gained the right to collect tithe from some estates in the Skała crown land: Skała, Gusztyniek, Bereżanka Mała, Łosiacz, Dawidkowce, Kołodróbki, and Synków, as well as Jezierzany, Głęboczek, and Łanowice in the Jezierzany demesne.²⁷

Towns by the Zbruch also changed their character as administrative centers. New offices were established, mainly related to border control. In Skała, a customs chamber was created, in Brody – a customs office, and

²⁶ NCHAU in Lviv, fond 146: Galicia Governance, description 13, case 562, c. 10.

²⁷ NCHAU in Lviv, fond 159: Solicitor General Office, description 9, case 909, c.

in Husiatyn – first a branch of the customs office in Kałaharówka,²⁸ and then in 1776, a main customs office [Adelsgruber P., Cohen L., Kuzmany B. 2011]. In 1793, a decision was made to relocate the main customs chamber from Zbrzyż to Husiatyn, and the smaller customs chamber – from Husiatyn to Zbrzyż.²⁹ In 1816, after the so-called Tarnopol country returned to Austria, customs chambers for the Tarnopol district were created in the following towns: Podwołoczyska, Okopy, Toki, Husiatyn, Tarnoruda, and Kałaharówka. In Tarnoruda, an auxiliary customs office was closed down in 1837.³⁰

Due to the proximity of the border, military garrisons were established, and new army facilities were built in most frontier towns. In Tarnoruda, there was a small military garrison (for infantry and hussars), a military hospital and a guardhouse.³¹ In Husiatyn in 1787, a small military unit was stationed. The Josephine registry for Skała noted in 1787 “a cabin for soldiers next to the border”.³²

In conclusion, the functioning of frontier towns in Galicia was conditioned not only by their geopolitical location, but also the policy of the Austrian authorities towards the church (closure of monasteries, new organization of church services), and towards the royal estates (the crown land and church property taken over by Austria). For some towns, the new circumstances fostered their growth, while for others they meant a crisis. The former group includes Brody, Podwołoczyska and Skała. The latter – Tarnoruda, Husiatyn, Touste and Leszniów. Socio-economic problems that affected towns on the eastern part of the border were similar to those observed in Galicia. As a result of partitions, a number of towns in

²⁸ Kałaharówka was a village by the river Zbruch, near the town of Stanów, which was not incorporated into Galicia. The establishment of a customs office there was undoubtedly the consequence of its location and the proximity of Satanów.

²⁹ *Continuatio edictorum et mandatorum universalium in regnis Galiciae et Lodomeriae a die 1. mensis januarii ad ultima decembris anno 1793 emanatorum* [Lviv 1794].

³⁰ “Gazeta Lwowska” 1815, no. 85, 24 X; Ferdinand Erzherzog von Oesterreich-Este, *Anfhebung des Hilfs=Zollamtes in Tarnoruda: Lemberg am 4. September 1837* (The closure of the auxiliary customs office in Tarnoruda in Lviv on September 4, 1837), brochure from the collection of the National Library in Warsaw, <https://polona.pl/item/anfhebung-des-hilfs-zollamtes-in-tarnoruda-lemberg-am-4-september-1837-zniesienie,Njc2ODQyMjk/0/#info:metadata>

³¹ NCHAU in Lviv, fond 19: Josephine registry, description 19, case 175, c. 5v; *Zbiór ustaw prowincjonalnych dla Królestwa Galicyi i Lodomeryi z 1837*, Lviv 1839.

³² NCHAU in Lviv, fond 19: Josephine registry, description 10, case 232, c. 8v.

Volhynia and Podolia were struck by crisis, manifested by a decrease in population and economic problems among the local craftsmen and merchants (Satanów, Zbrzyż, Czarnokozienice). The new political border did not, however, put halt to all economic relations between eastern Galicia, Volhynia, and Podolia. In Galicia, land (along with the towns located there) was acquired by land owners from the other side of the Zbruch. One example was the Brody estate purchased in 1833 by Jan Młodecki, a land owner from Volhynia (Russian partition) [Kuzmany B. 2011.

REFERENCES:

- Adelsgruber P., Cohen L. (2011), B. Kuzmany, *Getrennt und doch verbunden. Grenzstädte zwischen Österreich und Russland 1772 – 1815*, Wien-Köln-Weimar.
- Augustynowicz Ch. (2015), *Grenze(n) und Herrschafte(n) in der kleinpolnischen Stadt Sandomierz 1772–1844*, Wien.
- Білінська Л. (2009), Мікротопоніми Тисмениччини відомного походження, „Наукові записки ТНПУ ім. В. Гнатюка. Сер. Мовознавство“, Тернопіль, Вип. 2 (17), p. 172–181.
- Dolinovskiy V. (2013), *Соціально-професійна структура міщан Олеська на підставі інвентаря будинків 1789 р.*, (in:) *Galicyskie miasta w epoce zmian społeczno-politycznych w Europie Środkowo-Wschodniej w XVIII-XIX wieku*, T. Kargol, B. Petryszak and K. Ślusarek (eds.), Kraków-Lwów, p. 21–50.
- Долинська М. (2006), *Історична топографія Львова XIV–XIX ст.*, Львів.
- Долинська М. (2018), *Йосифінська метрика – головне джерело для відтворення історичної топографії (культурного краєвиду) міст, містечок і сіл Галичини*, (in:) *Galicyskie miasta w epoce zmian społeczno-politycznych w Europie Środkowo-Wschodniej w XVIII-XIX wieku*, T. Kargol, B. Petryszak and K. Ślusarek (eds.), Kraków-Lwów, p. 81–94.
- Долинська М., Погорілко М. (2015), *3 історичної топографії Львова (гори Львова)*, „Записки Наукового товариства імені Шевченка“, Львів, Т. 268, p. 107–127.
- Drobesch W. (2009), *Bodenerfassung und Bodenbewertung als Teil einer Staatsmodernisierung. Theresianische Steuerrectifikation, Josephinischer Kataster und Franziszeischer Kataster*, (in:) R. Furter, A.-L. Head-König, L. Lorenzetti (ed.), *Les migrations de retour. Rückwanderungen, Histoire des Alpes – Storia delle Alpi – Geschichte der Alpen*, 14/2009, p. 165–184.
- Falniowska-Gradowska A. (1982), *Studia nad społeczeństwem województwa krakowskiego w XVIII wieku. Struktura własności ziemskiej i użytkowanie gruntów w świetle katastru józefińskiego*, Warszawa.
- Falniowska-Gradowska A., Leśniak F. (2009), *Struktura własności ziemskiej i użytkowania gruntów w Galicji w cyrkulach rzeszowskim, sanockim i tarnowskim w świetle katastru józefińskiego (1785–1787)*, Toruń.
- Feucht R. (2008), *Flächenangaben im österreichischen Kataster*. Diplomarbeit am Institut für Geoinformation und Kartografie der Technischen Universität Wien.
- Fierich J. (1950), *Kultury rolnicze, zmianowanie i zbiory w katastrze józefińskim*, „Roczniki Dziejów Społecznych i Gospodarczych“, XII.

- Іваночко У. (2006), *Вплив соціально-функціональних процесів на розвиток урбанізації в Галичині кінця XVIII – початку ХХ ст.*, (in:) *Історична топографія та соціотопографія України*, Зб. наук. праць, Редкол.: Я. Дашкевич, П. Сохань та ін., Львів, с. 258–298.
- Jewuła Ł. (2013), *Galicyskie miasta i miasteczka oraz ich mieszkańcy w latach 1772–1848*, Kraków.
- Kańkowski M. (2013), *Miasto Józefów w świetle opisań urbarialnych*, (in:) *Galicyskie miasta w epoce zmian społeczno-politycznych w Europie Środkowo-Wschodniej w XVIII-XIX wieku*, T. Kargol, B. Petryszak and K. Ślusarek (eds.), Kraków–Lwów, p. 123–130.
- Kargol T. (2013), *Konfrontacja metryki józefińskiej z innymi źródłami historycznymi na przykładzie topografii i społeczeństwa Brodów w II połowie XVIII wieku*, (in:) *Galicyskie miasta w epoce zmian społeczno-politycznych w Europie Środkowo-Wschodniej w XVIII-XIX wieku*, T. Kargol, B. Petryszak and K. Ślusarek (eds.), Kraków–Lwów, p. 131–148.
- Kossowski A. (1935), *Jan Alojzy Aleksandrowicz*, (in:) *Polski Słownik Biograficzny*, vol. 1. Polska Akademia Umiejętności.
- Krętosz J. (1996), *Archidiecezja lwowska obrządku łacińskiego w okresie józefinizmu (1772–1815)*, Katowice.
- Kulczykowski M. (1972), *Andrychowski ośrodek płócienniczy w XVIII i XIX wieku*, Wrocław.
- Kulczykowski M. (1976), *Chłopskie tkactwo bawełniane w ośrodku andrychowskim w XIX wieku*, Wrocław.
- Kuzmany B. (2011), *Eine galizische Grenzstadt im langen 19. Jahrhundert*, Wien–Köln–Weimar 2011.
- Kwocińska E. (2016), *Husiatyn*, in: *Miasta wielu religii. Topografia sakralna ziem wschodnich dawnej Rzeczypospolitej*, M. Jakubowski, M. Sas, F. Walczyna (eds.), Warszawa.
- Лаба В. (2001), *Історія міста Перемишляни від найдавніших часів до 1939 року*, Львів.
- Лужецька О. (2014), *Мікротопонімія Південно-Західного Опілля*, Дис. на здобуття наук. ст. канд. філологічних наук, Тернопіль.
- Nestorow R. (2008), *Kościół parafialny p.w. św. Stanisława Biskupa i Męczennika w Tarnorudzie Polskiej*, in: *Kościoty i klasztory rzymskokatolickie dawnego województwa ruskiego*, Vol 16, Kraków.
- Państwo wojnicke w metryce józefińskiej z 1785–1787 roku*. Wojnicz, Zamoście, Ratnawy i Łopoi, ed. J. Szymański, Wojnicz 2000.
- Петришин Г., Іваночко У. (1999), *Еволюція принципів класифікації міст Галичини в австрійський період*, (in:) *Книга міст Галичини. Міждисциплінарні дослідження у містознавстві*, „Вісник Державного університету «Львівська політехніка», Львів,, № 379, p. 67–95.
- Rozdolski R. (1961), *Die grosse Steuer- und Agrarreform Joseph II*, Warschau.
- Rozdolski R. (1962), *Stosunki poddańcze w dawnej Galicji*, vol. 1–2, Warszawa.
- Ruszała K. (2013), *Spółeczeństwo miasteczka galicyjskiego w pierwszych latach rządów austriackich w świetle pierwszego katastru gruntowego, tzw. metryki józefińskiej na przykładzie Jasta*, (in:) *Spółeczeństwo i gospodarka Galicji w latach 1772–1867. Źródła i perspektywy badań. Zbiór studiów* (eds) T. Kargol and K. Ślusarek, Kraków 2014, p. 129–144;
- Rutkowski J. (1917), *Galicyski kataster gruntowy jako podstawa statystyki własności ziemskiej*, „Wiadomości Statystyczne o Stosunkach Krajowych”, vol. 25: vol. 3, p. 23–36.
- Słownik geograficzny Królestwa Polskiego i innych krajów słowiańskich*, Volume XIV, Warsaw 1895.
- Styś W. (1932), *Metryki gruntowe józefińskie jako źródło do historii gospodarczej Galicji*, „Roczniki Dziejów Społecznych i Gospodarczych”, II., p. 86–97.
- Ślusarek K. (2018), *Materiały podatkowe jako źródło do dziejów miast galicyjskich w czasach józefińskich*, (in:) *Galicyskie miasta w epoce zmian społeczno-politycznych w Europie*

-
- Środkowo-Wschodniej w XVIII–XIX wieku*, collected works (eds). T. Kargol, B. Petryszak, K. Ślusarek, Kraków–Lwów, p. 269–288.
- Ślusarek K. (2011), *Drobna szlachta w Galicji 1772 – 1848*, Jędrzejów-Kraków.
- Вирста Н. (2013), *Українські та німецькі прізвища, мотивовані назвами професій (лексико-семантичний аналіз)*, „Актуальні проблеми філології та перекладознавства“, Хмельницький, Вип. 6 (1), p. 36–46.
- Zamoyski G. (2013), *Nowy Targ i jego mieszkańcy w świetle metryki józefińskiej*, (in:) *Galiczyjskie miasta w epoce zmian społeczno-politycznych w Europie Środkowo-Wschodniej w XVIII-XIX wieku*, T. Kargol, B. Petryszak and K. Ślusarek (eds.), Kraków–Lwów, p. 289–313.